



NEW PRODUCT BRIEF

Riedon™ SSA-2 Series Analog Current Sensor by Bourns

INTRODUCTION

The Riedon™ SSA-2 Series Analog Current Sensor by Bourns offers a high accuracy current sensing solution with greater operational stability compared to typical Hall Effect sensors. Bourns developed this series to give designers a high quality device that delivers immunity to stray magnetic fields.

This capability is important as stray magnetic fields can interfere with the operation of sensors in sensitive electronic devices, which could potentially cause inaccurate readings, device failure or even safety hazards. In addition, the SSA-2 Series Analog Current Sensor meets unipolar power supply requirements, making these devices superior measurement choices for a wide variety of battery-related current sensing applications.

FEATURES

- 100 A to 1000 A nominal current
- AC or DC circuits
- 1500 VDC Reinforced isolation
- ±0.2 % Tolerance
- Amplified differential output, ±2.5 V peak
- RoHS compliant*

BENEFITS

- High Quality, High Accuracy
- Effective Immunity to Stray Magnetic Fields
- Meets Unipolar Power Supply Requirements

TYPICAL APPLICATIONS

- Battery systems
- Renewable energy
- Motor drives
- EV charging stations

HOW TO ORDER

Model	SSA-2 - 100A
Nominal Current	100A = 100 A 250A = 250 A 500A = 500 A 1000A = 1000 A

ELECTRICAL CHARACTERISTICS

Series	Nominal Current (A)	Overcurrent (1 s, dipped)	Power Supply (3.0 to 5.5 VDC) with high impedance load	TCR (25 °C - 95 °C)	Bandwidth (electronics)	Signal to Noise Ratio (SNR)	Operating Temperature
SSA-2-100A	100	600 A	@ 3.0 V, 20 mA typical	±30 PPM/°C	300 kHz	$V_{IN} = 100 \text{ mVPP}$, $f_{IN} = 1 \text{ kHz}$, $BW = 10 \text{ kHz}$ 80 dB min., 84 dB typical $V_{IN} = 100 \text{ mVPP}$, $f_{IN} = 10 \text{ kHz}$, $BW = 100 \text{ kHz}$ 70 dB typical	-40 °C to +115 °C ambient
SSA-2-250A	250	1500 A					-40 °C to +125 °C primary conductor
SSA-2-500A	500	3000 A	@ 5.5 V, 40 mA typical				(see derating curve on page 4 of data sheet)
SSA-2-1000A	1000	6000 A					

For full characteristics, see data sheet

*RoHS Directive 2015/863, Mar 31, 2015 and Annex.

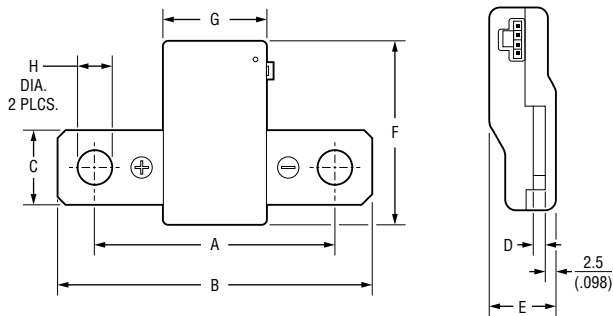
NEW PRODUCT BRIEF

Riedon™ SSA-2 Series Analog Current Sensor by Bourns

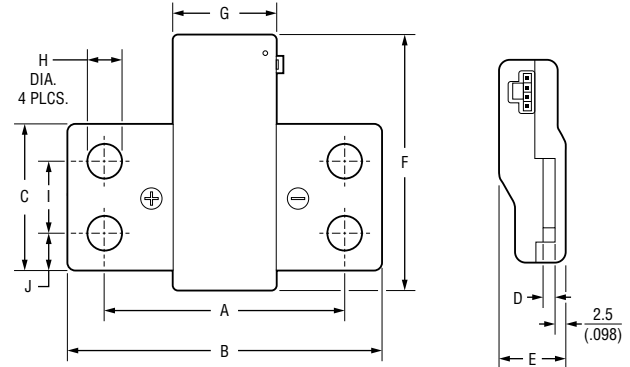


PRODUCT DIMENSIONS

SSA-2-100A to SSA-2-500A



SSA-2-1000A



Product Dimensions

Model	SSA-2-100A	SSA-2-250A	SSA-2-500A	SSA-2-1000A
A	$\frac{63.5 \pm 0.5}{(2.50 \pm .020)}$			
B	$\frac{84 \pm 0.5}{(3.307 \pm .020)}$			
C	$\frac{20 \pm 0.5}{(.787 \pm .020)}$			$\frac{40 \pm 0.5}{(1.575 \pm .020)}$
D	$\frac{3 \pm 0.5}{(.118 \pm .020)}$		$\frac{4 \pm 0.5}{(.157 \pm .020)}$	
E	$\frac{16.4 \pm 0.5}{(.646 \pm .020)}$		$\frac{17.4 \pm 0.5}{(.685 \pm .020)}$	
F	$\frac{48.7 \pm 0.5}{(1.917 \pm .020)}$			$\frac{68.7 \pm 0.5}{(2.705 \pm .020)}$

Model	SSA-2-100A	SSA-2-250A	SSA-2-500A	SSA-2-1000A
G	$\frac{28 \pm 0.5}{(1.102 \pm .020)}$			
H	$\frac{8.7 \pm 0.5}{(.343 \pm .020)}$			
I	—	—	—	$\frac{19 \pm 0.5}{(.748 \pm .020)}$
J	—	—	—	$\frac{10.5 \pm 0.5}{(.413 \pm .020)}$
Mass (g)	67	69	84	145

DIMENSIONS: $\frac{\text{MM}}{\text{(INCHES)}}$

www.bourns.com

Americas: Tel +1-951 781-5500
Email americus@bourns.com

EMEA: Tel +36 88 885 877
Email eurocus@bourns.com

BOURNS®

Asia-Pacific: Tel +886-2 256 241 17
Email asiacus@bourns.com

Mexico: Tel +52 614 478 0400
Email mexicus@bourns.com

COPYRIGHT © 2024 · BOURNS, INC. · 12/24 · e/SC2430

"Bourns" is a registered trademark of Bourns, Inc. in the United States and other countries.
In April 2023, BE Services Company, Inc., a subsidiary of Bourns, Inc., purchased certain assets of Riedon, Inc., including its logo and trademarks and the right to continue to manufacture former Riedon™ products.

The "Riedon Logo" is a registered trademark of BE Services Company, Inc. in the United States.
"Riedon" is a trademark of BE Services Company, Inc.