

BOURNS®

Features

- Non-contacting HE and/or MR technology
- Connector for flying lead solution
- Electronic calibration
- Production-proven design
- Absolute or incremental solution

Applications

- Actuated boot door position sensor
- Actuated rear door position sensor
- Actuated side door position sensor
- Pedal box position sensor
- Seat position sensor

Hollow Shaft Position Feedback Sensor

General Function

The Bourns® Hollow Shaft Position Feedback Sensor is a robust, reliable, and highly accurate non-contacting position sensor. This sensor offers an extremely low profile and the ability to mount on a shaft. The sensor can be used on any spindle gear or shaft drive mechanism for applications such as actuated door closure systems. The sensor's output can be configured to provide an absolute or incremental output. It is capable of resolving 360 degrees of motion with high accuracy and 12 bit resolution in a small, robust package. The incremental sensor version does not require a gear drive to establish position.

Please note that this document refers to general product specifications which are subject to change.

Typical Specifications

Specification	Min.	Typ.	Max.
Measurement Range			
absolute (turns)	6	12 to 15	24
incremental		infinite	
Non-Linearity *			
absolute		depends on gear drive/ratio	
incremental		no. of pulses <12, depending on shaft diameter	
Hysteresis			
		t.b.d. *	
Angular Resolution			
absolute		0.2 %	
incremental		depends on no. of pulses	
Angular Velocity			
absolute		1.500 °/s	
incremental		10.000 rpm	
Delay after Start-up			
			15 ms
Temperature Range			
	-40 °C		+85 °C
Input Voltage			
		5 V +/- 10 %	
Nominal Voltage			
		5 V	
Nominal Current			
		<20 mA	
Signal Range			
absolute		10 ... 90 % **	
IP			
			up to 69k ***

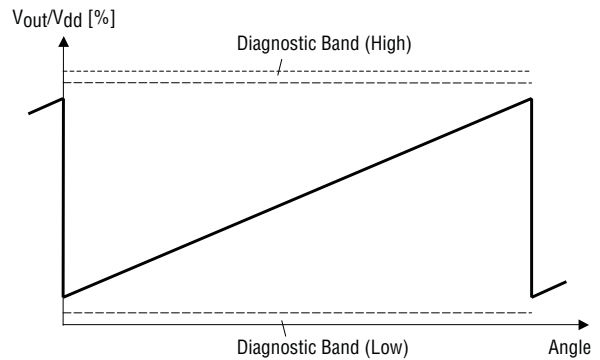
* achievable value depends on gear drive

** depends on programmable diagnostic ranges

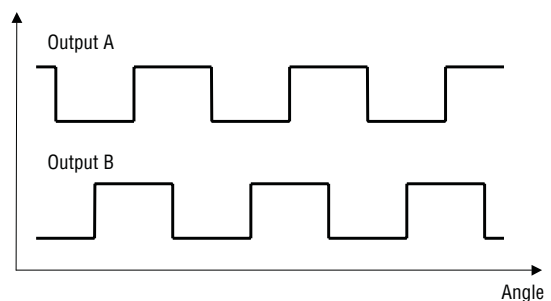
***others available upon customer request

Typical Output

Absolute Output Signal



Incremental Output Signals



BOURNS®
Automotive Division

Europe:
Bourns Sensors GmbH
Robert-Bosch-Str. 14
D-82054 Sauerlach
Phone: +49 (0) 8104 646-0

The Americas:
Bourns, Inc.
1660 N. Opdyke Road, Ste. 200
Auburn Hills, MI 48326-2655 USA
Phone: +1 248 926-4088

Asia:
Bourns, Inc.
10F, No. 146, Sung Jiang Road
Taipei, Taiwan, 104 PRC
Phone: +886 2 2562-4117

www.bourns.com
automotive@bourns.com

07/11

Specifications are subject to change without notice.
Customers should verify actual device performance in their specific applications.