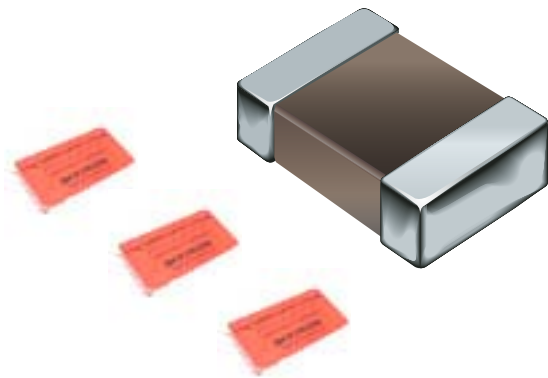




# Product Obsolescence Memo

## INDUCTIVE COMPONENTS

Bourns Manufacturers Representatives  
Corporate Distributor Product Managers  
Americas Sales Team  
Asia Sales Team  
Europe Sales Team  
Bourns Internal  
Bourns Plant Managers



May, 2008

### **Lab Kits: Models CF252016, CF322513 and CF453215**

The following lab kits will not be replaced after the current stock is depleted:

[CF252016-LAB1](#)  
[CF322513-LAB1](#)  
[CF453215-LAB1](#)

There have been insufficient requests for these kits to justify assembling more of them.