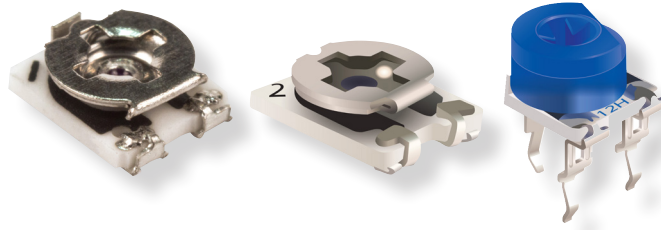




# PRODUCT CHANGE NOTIFICATION

## TRIMPOT® TRIMMING POTENTIOMETERS



## Bourns® Model TC33, TC42 and 3306 Series Trimpot® Trimming Potentiometers

### *Material Changes*

Riverside, California - November 26, 2024 – Bourns is pleased to announce that in the spirit of continuous improvement, effective May 1, 2025, the Model [TC33](#), [TC42](#) and [3306](#) Series Open Frame Trimpot® Trimming Potentiometer resistive inks will be lead free. The resistive material in these open frame trimmers currently contain lead compounds. By excluding these compounds and using new material in the resistive inks, Bourns can offer RoHS compliancy without exemption, while providing a more environmentally-friendly and sustainable product.

Thorough testing has been completed – reliability testing and samples are available upon request. Bourns recommends that customers test the affected part numbers in their specific applications for verification of satisfactory performance.

The product's fit, function, quality and reliability remain the same. The form has been changed by removing the lead from the resistor material. The product continues to meet every specification guaranteed on the data sheets.

Affected part numbers are shown on the following page.

#### **Implementation dates are as follows:**

Last time buy date: **December 31, 2024**

Date that manufacturing of existing products will cease: **April 30, 2025**

Date that deliveries of modified products will begin: **May 1, 2025**

First date code using the above changes: **20250501**

*If you have any questions or need additional information, please feel free to [contact Customer Service/Inside Sales](#).*

*Users should verify that the described changes will not impact the performance of the product in their specific applications.*

T2417

**Affected Part Numbers**

TC33X-1-101E	TC33X-2-303E	TC42-2	3306F-1-101	3306P-1-103
TC33X-1-102E	TC33X-2-303G	TC42X-2-101E	3306F-1-102	3306P-1-104
TC33X-1-103E	TC33X-2-304E	TC42X-2-102E	3306F-1-103	3306P-1-105
TC33X-1-104E	TC33X-2-304G	TC42X-2-103E	3306F-1-104	3306P-1-201
TC33X-1-105E	TC33X-2-333E	TC42X-2-104E	3306F-1-105	3306P-1-202
TC33X-1-201E	TC33X-2-474E	TC42X-2-105E	3306F-1-201	3306P-1-203
TC33X-1-202E	TC33X-2-501E	TC42X-2-201E	3306F-1-202	3306P-1-204
TC33X-1-203E	TC33X-2-501G	TC42X-2-202E	3306F-1-203	3306P-1-253
TC33X-1-204E	TC33X-2-502E	TC42X-2-203E	3306F-1-204	3306P-1-254
TC33X-1-222E	TC33X-2-502G	TC42X-2-204E	3306F-1-253	3306P-1-471
TC33X-1-472E	TC33X-2-503E	TC42X-2-221E	3306F-1-254	3306P-1-472
TC33X-1-473E	TC33X-2-503G	TC42X-2-223E	3306F-1-501	3306P-1-473
TC33X-1-501E	TC33X-2-504E	TC42X-2-303E	3306F-1-502	3306P-1-501
TC33X-1-502E	TC33X-2-504G	TC42X-2-333E	3306F-1-503	3306P-1-502
TC33X-1-503E		TC42X-2-471E	3306F-1-504	3306P-1-503
TC33X-1-504E		TC42X-2-472E	3306K-1-101	3306P-1-504
TC33X-2-101E		TC42X-2-473E	3306K-1-102	3306W-1-101
TC33X-2-101G		TC42X-2-474E	3306K-1-103	3306W-1-102
TC33X-2-102E		TC42X-2-501E	3306K-1-104	3306W-1-103
TC33X-2-102G		TC42X-2-502E	3306K-1-105	3306W-1-104
TC33X-2-103E		TC42X-2-503E	3306K-1-201	3306W-1-105
TC33X-2-103G		TC42X-2-504E	3306K-1-202	3306W-1-201
TC33X-2-104E			3306K-1-203	3306W-1-202
TC33X-2-104G			3306K-1-204	3306W-1-203
TC33X-2-105E			3306K-1-221	3306W-1-204
TC33X-2-105G			3306K-1-222	3306W-1-221
TC33X-2-153E			3306K-1-223	3306W-1-222
TC33X-2-201E			3306K-1-253	3306W-1-223
TC33X-2-201G			3306K-1-254	3306W-1-253
TC33X-2-202E			3306K-1-303	3306W-1-254
TC33X-2-202G			3306K-1-471	3306W-1-302
TC33X-2-203E			3306K-1-472	3306W-1-304
TC33X-2-203G			3306K-1-473	3306W-1-471
TC33X-2-204E			3306K-1-501	3306W-1-473
TC33X-2-204G			3306K-1-502	3306W-1-501
TC33X-2-301E			3306K-1-503	3306W-1-502
TC33X-2-301G			3306K-1-504	3306W-1-503
TC33X-2-302E			3306P-1-101	3306W-1-504
TC33X-2-302G			3306P-1-102	