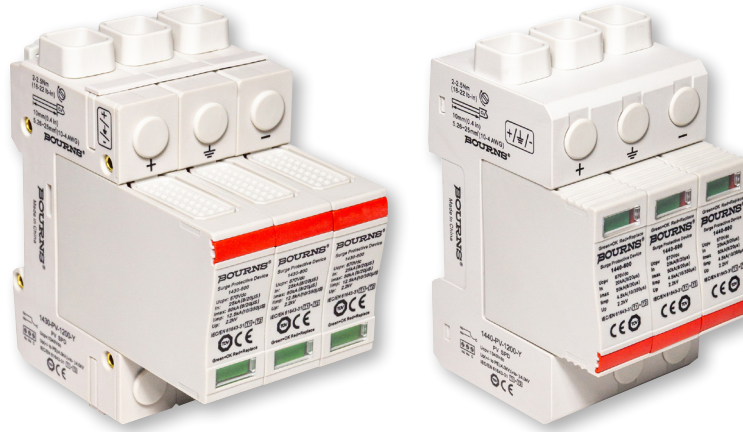




# PRODUCT CHANGE NOTIFICATION

## SURGE PROTECTIVE DEVICES



### Select Bourns® 1430 and 1440 Series Surge Protective Devices

#### *Change in Printed Marking on Module and Base*

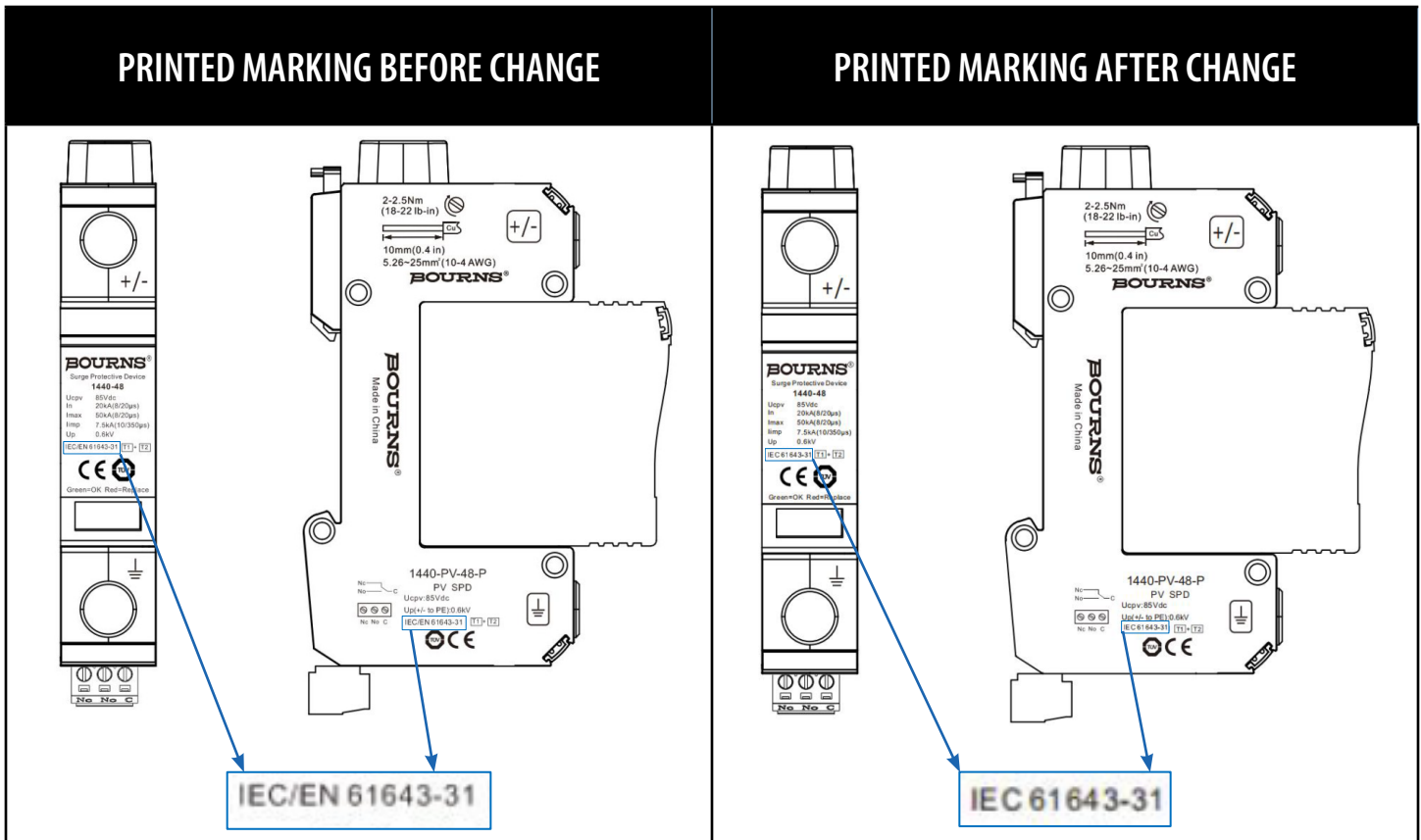
Riverside, California – February 14, 2025 – To conform with updated TÜV certificate requirements for the Bourns® [1430](#) and [1440](#) Series Surge Protective Devices, effective April 1, 2025, Bourns will update the printed marking on these models. The printed marking on the module and base of the affected part numbers will change from “IEC/EN 61643-31” to “IEC 61643-31”.

A list of affected part numbers is provided below.

Affected Part Numbers					
1430-PV-48-P	1430-PV-48-D	1430-PV-200-Y	1440-PV-100-P	1440-PV-100-D	1440-PV-400-Y
1430-PV-60-P	1430-PV-60-D	1430-PV-300-Y	1440-PV-150-P	1440-PV-150-D	1440-PV-600-Y
1430-PV-100-P	1430-PV-100-D	1430-PV-400-Y	1440-PV-200-P	1440-PV-200-D	1440-PV-800-Y
1430-PV-150-P	1430-PV-150-D	1430-PV-600-Y	1440-PV-300-P	1440-PV-300-D	1440-PV-1000-Y
1430-PV-200-P	1430-PV-200-D	1430-PV-800-Y	1440-PV-400-P	1440-PV-400-D	1440-PV-1200-Y
1430-PV-300-P	1430-PV-300-D	1430-PV-1000-Y	1440-PV-500-P	1440-PV-500-D	1440-PV-1500-Y
1430-PV-400-P	1430-PV-400-D	1430-PV-1200-Y	1440-PV-600-P	1440-PV-600-D	
1430-PV-500-P	1430-PV-500-D	1430-PV-1500-Y	1440-PV-750-P	1440-PV-100-Y	
1430-PV-600-P	1430-PV-600-D	1440-PV-48-P	1440-PV-48-D	1440-PV-200-Y	
1430-PV-750-P	1430-PV-100-Y	1440-PV-60-P	1440-PV-60-D	1440-PV-300-Y	

Users should verify that the described changes will not impact the performance of the product in their specific applications.

SPD2502



This change in marking will affect the form of the product. The fit, function, quality and reliability of the affected part numbers will remain unchanged. The product specifications will not change. Traceability will be maintained through lot code and date code.

Samples built with the above change are available on request. Bourns recommends that customers test the affected part numbers in their specific applications for verification of satisfactory performance.

**Implementation dates are as follows:**

- Date that the use of the current marking will cease: **April 1, 2025**
- Date that the use of the new marking will begin: **April 2, 2025**
- First date codes using the above changes: **2513**

If you have any questions or need additional information, please feel free to [contact Customer Service/Inside Sales](#).