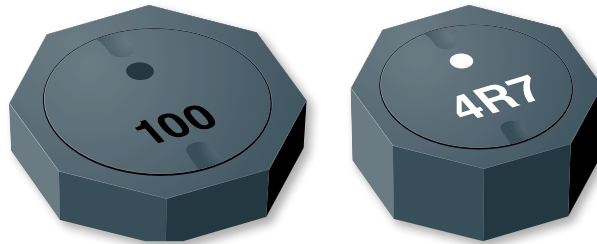




PRODUCT CHANGE NOTIFICATION

MAGNETICS



Bourns® Model SRU1063A Series & Model SRU1063-220Y Shielded Power Inductors

Manufacturing Site Relocation, Process Automation, and Gluing Method Change

Riverside, California – August 8, 2024 – To accommodate increasing production demands and in the spirit of continuous improvement, effective February 10, 2025, Bourns will relocate the manufacturing site for the Model [SRU1063A Series](#) and the Model [SRU1063-220Y](#) Shielded Power Inductors.

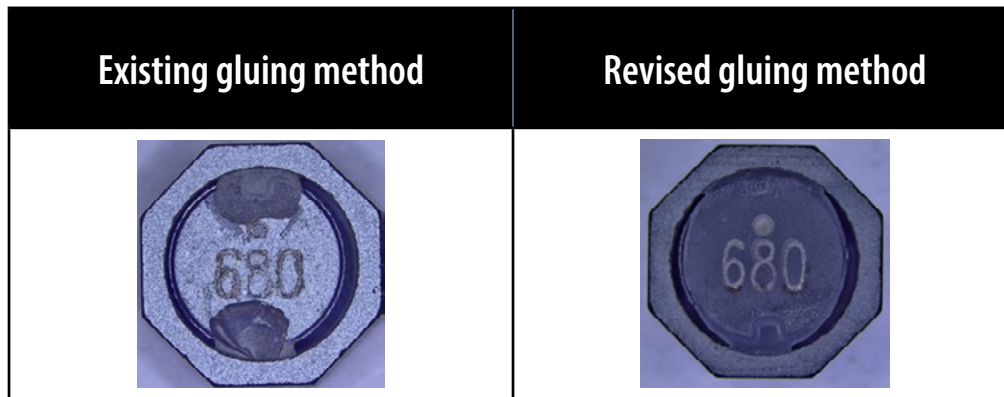
Bourns will also change its gluing, marking, testing, and packaging processes to a single automated process. Additionally, the gluing method will be changed for some models of the [SRU1063A](#) series. The modified gluing method will have a larger application area. A list of affected part numbers is included below.

Affected Part Numbers – Relocation, Process Automation			
SRU1063A-4R7Y	SRU1063A-150Y	SRU1063A-330Y	SRU1063A-101Y
SRU1063A-6R8Y	SRU1063A-220Y	SRU1063A-470Y	SRU1063A-220YN
SRU1063A-100Y	SRU1063-220Y	SRU1063A-680Y	SRU1063A-330YN

Affected Part Numbers – Gluing Method Change		
SRU1063A-4R7Y	SRU1063A-150Y	SRU1063A-470Y
SRU1063A-6R8Y	SRU1063A-220Y	SRU1063A-680Y
SRU1063A-100Y	SRU1063A-330Y	SRU1063A-101Y

Users should verify that the described changes will not impact the performance of the product in their specific applications.

IC24134



The fit, form and function of the affected part numbers will remain the same. The quality and reliability of the affected inductors should be improved as a result of the changes. The country of origin of the affected part numbers will remain the same. Traceability will be maintained through lot code and date code.

The inductors produced at the relocated manufacturing site will meet the same data sheet specifications as the inductors from the existing site.

Samples are available upon request. Bourns recommends that customers test the affected part numbers in their specific applications for verification of satisfactory performance.

Implementation dates are as follows:

Date that deliveries of products manufactured at the current manufacturing site, with current gluing method and with current process will cease: **February 9, 2025**

Date that deliveries of products manufactured at the relocated manufacturing site, with new gluing process and new automated process will begin: **February 10, 2025**

First date code using the above changes: **2507**

If you have any questions or need additional information, please feel free to [contact Customer Service/Inside Sales](#).