

PRODUCT CHANGE NOTIFICATION

MAGNETICS

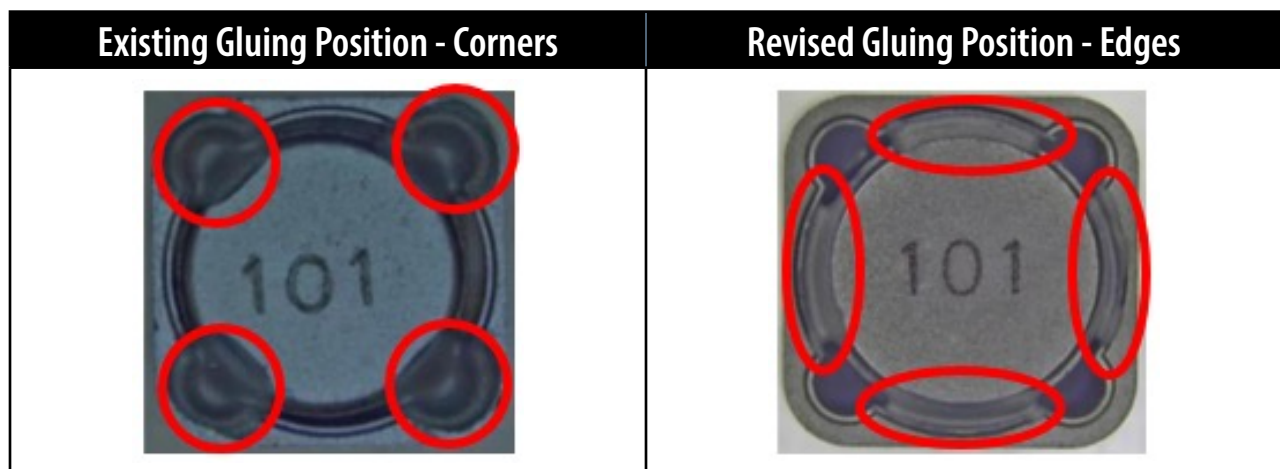


Bourns® Model SRR1210A Series Shielded Power Inductors

Gluing Position Change

Riverside, California – May 6, 2024 – In the spirit of continuous improvement, effective July 30, 2024, Bourns will change the gluing position for the [Model SRR1210A Series Shielded Power Inductors](#) from the corners to the edges to enhance their durability and reliability. A list of affected part numbers is included below.

Affected Part Numbers			
SRR1210A-1R0Y	SRR1210A-120M	SRR1210A-680M	SRR1210A-391M
SRR1210A-1R8Y	SRR1210A-150M	SRR1210A-820M	SRR1210A-471M
SRR1210A-2R2Y	SRR1210A-180M	SRR1210A-101M	SRR1210A-561M
SRR1210A-3R3Y	SRR1210A-220M	SRR1210A-121M	SRR1210A-681M
SRR1210A-4R7Y	SRR1210A-270M	SRR1210A-151M	SRR1210A-821M
SRR1210A-5R6Y	SRR1210A-330M	SRR1210A-181M	SRR1210A-102M
SRR1210A-6R8Y	SRR1210A-390M	SRR1210A-221M	
SRR1210A-8R2Y	SRR1210A-470M	SRR1210A-271M	
SRR1210A-100M	SRR1210A-560M	SRR1210A-331M	



Users should verify that the described changes will not impact the performance of the product in their specific applications.

IC24082

As shown in the image above, the form of the affected part numbers will change slightly due to the change in gluing position. The fit and function of the affected part numbers will remain the same. The quality and reliability of the affected inductors should be improved as a result of the change. Traceability will be maintained through lot code and date code.

Samples are available upon request. Bourns recommends that customers test the affected part numbers in their specific applications for verification of satisfactory performance.

Implementation dates are as follows:

Date that deliveries of products manufactured with the glue position change will begin: **July 30, 2024**
First date code using the above changes: **2431**

If you have any questions or need additional information, please feel free to [contact Customer Service/Inside Sales](#).

Users should verify that the described changes will not impact the performance of the product in their specific applications.