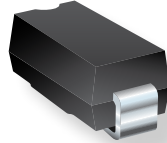




PRODUCT CHANGE NOTIFICATION

DIODES



Automated Assembly Process and Uniform Die Size for Select Bourns® Commercial Grade TVS Diodes

Model SMCJ, 1.5SMC and SMLJ Series

Riverside, California – November 24, 2020 – Effective March 22, 2021, Bourns will start using the uniform die size and automated assembly process to enhance the quality and production efficiency of select Bourns® Model [SMCJ](#), [1.5SMC](#) and [SMLJ](#) Commercial Grade TVS Diode Series housed in an SMC package.

The electrical performance of the affected product will remain within the existing datasheet specifications. The fit, function and reliability of the affected product will remain the same. Packaging dimensions for the affected product will remain the same.

The changes will affect the form of the product, as depicted below. With the new process, tie bars will be visible at the side of the package, but there is no internal connection between these tie bars.



A list of affected part numbers is included on the following page. Samples are available upon request.

Implementation dates are as follows:

Date evaluation samples of the new model design will be available: **November 20, 2020**

Date that manufacturing of existing products will cease: **March 21, 2021**

Date that deliveries of modified products will begin: **March 22, 2021**

First date code using the above changes: **2112**

If you have any questions or need additional information, please feel free to contact [Customer Service/Inside Sales](#).

Affected Part Numbers								
SMCJ Series								
SMCJ5.0A	SMCJ14A	SMCJ33A	SMCJ70A	SMCJ170A	SMCJ7.5CA	SMCJ17CA	SMCJ43CA	SMCJ90CA
SMCJ6.0A	SMCJ15A	SMCJ36A	SMCJ75A	SMCJ180A	SMCJ8.0CA	SMCJ18CA	SMCJ45CA	SMCJ100CA
SMCJ6.5A	SMCJ16A	SMCJ40A	SMCJ78A	SMCJ200A	SMCJ8.5CA	SMCJ20CA	SMCJ48CA	SMCJ110CA
SMCJ7.0A	SMCJ17A	SMCJ43A	SMCJ85A	SMCJ220A	SMCJ9.0CA	SMCJ22CA	SMCJ51CA	SMCJ120CA
SMCJ7.5A	SMCJ18A	SMCJ45A	SMCJ90A	SMCJ250A	SMCJ10CA	SMCJ24CA	SMCJ54CA	SMCJ130CA
SMCJ8.0A	SMCJ20A	SMCJ48A	SMCJ100A	SMCJ300A	SMCJ11CA	SMCJ26CA	SMCJ58CA	SMCJ150CA
SMCJ8.5A	SMCJ22A	SMCJ51A	SMCJ110A	SMCJ350A	SMCJ12CA	SMCJ28CA	SMCJ60CA	SMCJ160CA
SMCJ9.0A	SMCJ24A	SMCJ54A	SMCJ120A	SMCJ5.0CA	SMCJ13CA	SMCJ30CA	SMCJ64CA	SMCJ170CA
SMCJ10A	SMCJ26A	SMCJ58A	SMCJ130A	SMCJ6.0CA	SMCJ14CA	SMCJ33CA	SMCJ70CA	SMCJ180CA
SMCJ11A	SMCJ28A	SMCJ60A	SMCJ150A	SMCJ6.5CA	SMCJ15CA	SMCJ36CA	SMCJ75CA	SMCJ200CA
SMCJ12A	SMCJ30A	SMCJ64A	SMCJ160A	SMCJ7.0CA	SMCJ16CA	SMCJ40CA	SMCJ78CA	SMCJ220CA

Affected Part Numbers						
SMLJ Series						
SMLJ5.0A	SMLJ13A	SMLJ33A	SMLJ75A	SMLJ5.0CA	SMLJ14CA	SMLJ36CA
SMLJ6.0A	SMLJ14A	SMLJ36A	SMLJ78A	SMLJ6.0CA	SMLJ15CA	SMLJ40CA
SMLJ6.5A	SMLJ15A	SMLJ40A	SMLJ85A	SMLJ6.5CA	SMLJ16CA	SMLJ43CA
SMLJ7.0A	SMLJ16A	SMLJ43A	SMLJ90A	SMLJ7.0CA	SMLJ17CA	SMLJ45CA
SMLJ7.5A	SMLJ17A	SMLJ45A	SMLJ100A	SMLJ7.5CA	SMLJ18CA	SMLJ51CA
SMLJ8.0A	SMLJ18A	SMLJ48A	SMLJ110A	SMLJ8.0CA	SMLJ20CA	SMLJ54CA
SMLJ8.5A	SMLJ20A	SMLJ51A	SMLJ120A	SMLJ8.5CA	SMLJ22CA	SMLJ60CA
SMLJ9.0A	SMLJ22A	SMLJ54A	SMLJ130A	SMLJ9.0CA	SMLJ24CA	SMLJ64CA
SMLJ10A	SMLJ24A	SMLJ60A	SMLJ150A	SMLJ10CA	SMLJ26CA	SMLJ75CA
SMLJ11A	SMLJ26A	SMLJ64A	SMLJ160A	SMLJ11CA	SMLJ30CA	SMLJ78CA
SMLJ12A	SMLJ30A	SMLJ70A	SMLJ170A	SMLJ13CA	SMLJ33CA	SMLJ85CA

Affected Part Numbers						
1.5SMC Series						
1.5SMC6.8A	1.5SMC22A	1.5SMC68A	1.5SMC200A	1.5SMC12CA	1.5SMC39CA	1.5SMC120CA
1.5SMC7.5A	1.5SMC24A	1.5SMC75A	1.5SMC220A	1.5SMC13CA	1.5SMC43CA	1.5SMC130CA
1.5SMC8.2A	1.5SMC27A	1.5SMC82A	1.5SMC250A	1.5SMC15CA	1.5SMC47CA	1.5SMC150CA
1.5SMC9.1A	1.5SMC30A	1.5SMC91A	1.5SMC300A	1.5SMC16CA	1.5SMC51CA	1.5SMC160CA
1.5SMC10A	1.5SMC33A	1.5SMC100A	1.5SMC350A	1.5SMC18CA	1.5SMC56CA	1.5SMC170CA
1.5SMC11A	1.5SMC36A	1.5SMC110A	1.5SMC400A	1.5SMC20CA	1.5SMC62CA	1.5SMC180CA
1.5SMC12A	1.5SMC39A	1.5SMC120A	1.5SMC6.8CA	1.5SMC22CA	1.5SMC68CA	1.5SMC200CA
1.5SMC13A	1.5SMC43A	1.5SMC130A	1.5SMC7.5CA	1.5SMC24CA	1.5SMC75CA	1.5SMC220CA
1.5SMC15A	1.5SMC47A	1.5SMC150A	1.5SMC8.2CA	1.5SMC27CA	1.5SMC82CA	1.5SMC250CA
1.5SMC16A	1.5SMC51A	1.5SMC160A	1.5SMC9.1CA	1.5SMC30CA	1.5SMC91CA	
1.5SMC18A	1.5SMC56A	1.5SMC170A	1.5SMC10CA	1.5SMC33CA	1.5SMC100CA	
1.5SMC20A	1.5SMC62A	1.5SMC180A	1.5SMC11CA	1.5SMC36CA	1.5SMC110CA	