

*RoHS COMPLIANT



BOURNS®

Features

- Complies with IEEE 802.3 standard specifications including 350 μH with 8 mA DC bias
- Minimum interwinding breakdown voltage of 1500 Vrms
- RoHS compliant
- Four ports connector with enhanced EMI
- Integrated magnetics design provides higher reliability and conserves board space

PT44216M4 - Quad Port 10/100 Base-Tx

Electrical Specifications @ 25 °C

Insertion Loss
 1-100 MHz-1.0 dB typ.

Return Loss
 1-10 MHz.....-20 dB typ.
 30-60 MHz.....-12 dB typ.
 60-80 MHz.....-12 dB typ.

Crosstalk
 1-10 MHz.....-40 dB typ.
 30-60 MHz.....-35 dB typ.
 60-100 MHz.....-30 dB typ.

CMRR
 1-50 MHz.....-30 dB typ.
 50-100 MHz.....-20 dB typ.

Operating Temperature0 °C to +70 °C
 Storage Temperature-40 °C to +85 °C

Physical Specifications

Metal ShieldingNickel-plated copper alloy
 ContactPhosphor bronze, 6 u-inch gold-flashed unless otherwise specified
 Housing.....Thermoplastic PBT UL94V0 rated

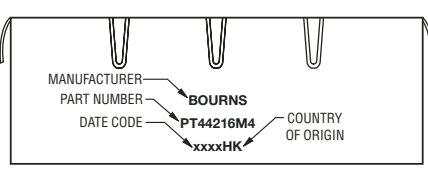
Packaging Specifications

.....160 pcs./tray

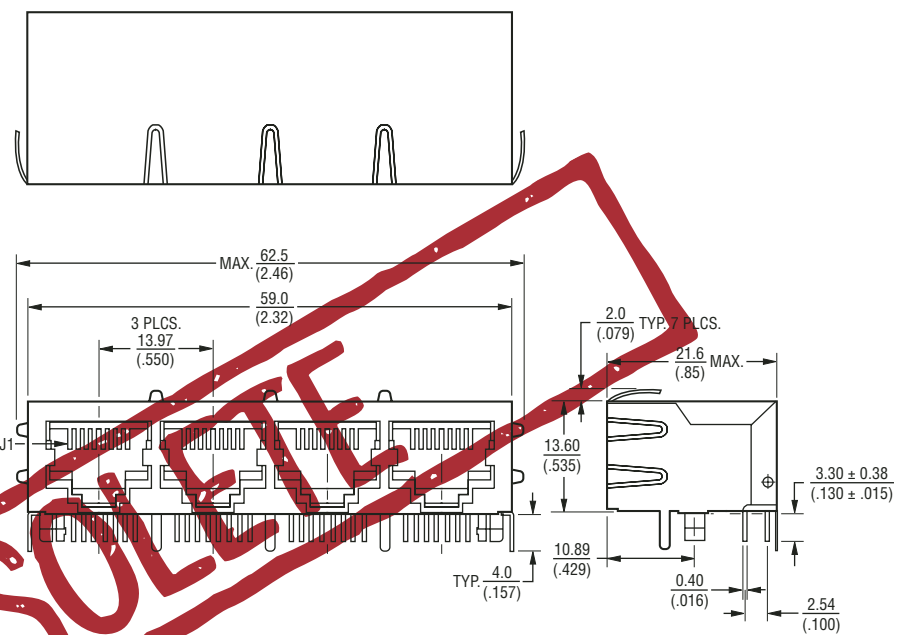
How to Order

Model PT44216M4

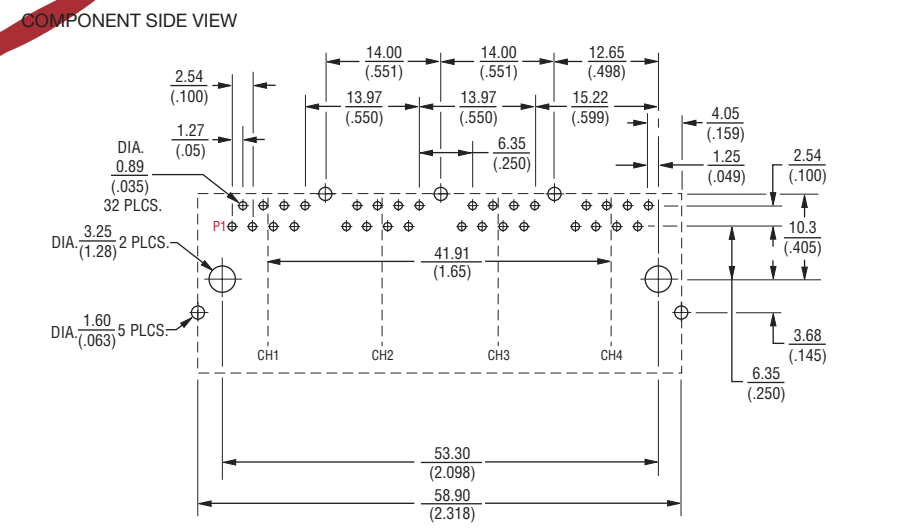
Typical Part Marking



Product Dimensions



Recommended PCB Layout

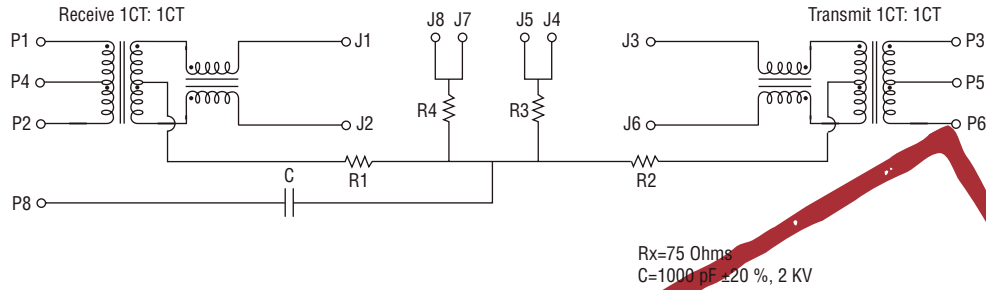


DIMENSIONS: $\frac{MM}{(INCHES)}$
 TOLERANCES: .XX $\frac{0.25}{(.01)}$
 TOLERANCES: .XXX $\frac{0.13}{(.005)}$

PT44216M4 - Quad Port 10/100 Base-Tx

BOURNS®

Electrical Schematic



OBSOLETE



Reliable Electronic Solutions

Asia-Pacific:

Tel: +886-2 2562-4117 • Fax: +886-2 2562-4116

Europe:

Tel: +41-41 768 5555 • Fax: +41-41 768 5510

The Americas:

Tel: +1-951 781-5500 • Fax: +1-951 781-5700

www.bourns.com