


BOURNS[®]

Model 3305
Single Turn Commercial
TRIMIT[®] Potentiometer
Wirewound Element

Actual Size

FEATURES

- Low cost commercial potentiometer
- Sealed to prevent contamination from fluxing, soldering and cleaning
- Smaller than transistor case — $\frac{5}{16}$ " Dia. x $\frac{3}{16}$ "
- Operating range —55° to +125°C
- Power rating 0.5 watt at 70°C
- SILVERWELD[®] termination alloys with multiple resistance wires eliminating vulnerable single wire termination
- Stops provided at each end of travel



3305P



3305W

OBSOLETE

STANDARD RESISTANCES

Resistance (ohms)	Part Numbers*		Nominal Resolution (Percent)
	3305P Printed Circuit Pins	3305W Printed Circuit Pins (Side Adjust)	
10	3305P-1-100	3305W-1-100	1.56
20	3305P-1-200	3305W-1-200	1.30
50	3305P-1-500	3305W-1-500	0.95
100	3305P-1-101	3305W-1-101	0.75
200	3305P-1-201	3305W-1-201	0.83
500	3305P-1-501	3305W-1-501	0.65

SPECIAL RESISTANCES AVAILABLE FROM 51 OHMS TO 19K.

Resistance (ohms)	Part Numbers*		Nominal Resolution (Percent)
	3305P Printed Circuit Pins	3305W Printed Circuit Pins (Side Adjust)	
1,000	3305P-1-102	3305W-1-102	0.54
2,000	3305P-1-202	3305W-1-202	0.45
5,000	3305P-1-502	3305W-1-502	0.36
10,000	3305P-1-103	3305W-1-103	0.30
20,000	3305P-1-203	3305W-1-203	0.23
25,000	3305P-1-253	3305W-1-253	0.23

*The last three digits of the part number represent the resistance in standard code.

Model 3305 TRIMIT[®] Potentiometer

SPECIFICATIONS

ELECTRICAL CHARACTERISTICS

Standard Resistance Range (See chart on front)	10 ohms to 25K ohms
Noise during Adjustment	100 ohms ENR maximum
Resistance Tolerance	±5% standard
Absolute Minimum Resistance	0.5 ohm or 1.0% maximum, whichever is greater
Continuity	Maintained for full mechanical range

ENVIRONMENTAL CHARACTERISTICS

Power Rating	0.5 watt at 70°C derating to 0 at +125°C
Operating Temperature Range	-55 to +125°C
Vibration	20G
Shock	50G
Dielectric Strength	900 volts AC minimum

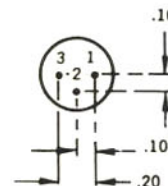
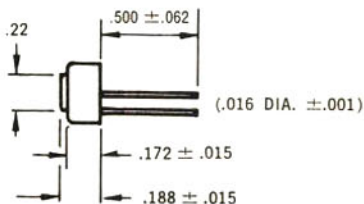
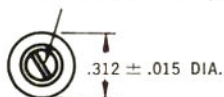
Humidity, MIL-STD-202B, Method 103	10 megohms minimum insulation resistance after removal from chamber
Seal	Hot water immersion
Mechanical Life	200 cycles without discontinuity

PHYSICAL CHARACTERISTICS

Markings	Manufacturer's name, resistance, date code, and manufacturer's model number
Mechanical Rotation	280 degrees nominal
Mechanical Stops	Solid
Weight	Approximately .02 oz.
Terminals:	
P, W	SOLDERABLE printed circuit pins
Specifications subject to change without notice.	

3305 P

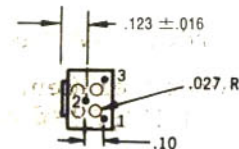
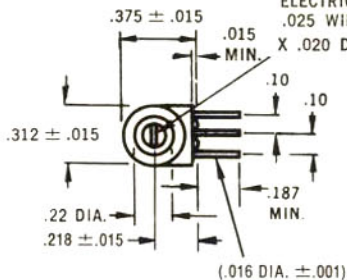
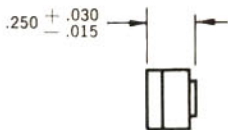
ELECTRICAL ADJUSTMENT
.025 WIDE SLOT X .10 LONG X .020 DEEP



OBSOLETE

3305 W

ELECTRICAL ADJUSTMENT
.025 WIDE SLOT X .10 LONG
X .020 DEEP



TOLERANCE: EXCEPT WHERE NOTED
DECIMALS: .XX ± .010
.XXX ± .005

