

E-Z-TRIM® Potentiometer

Model 3068

Commercial

Carbon Element

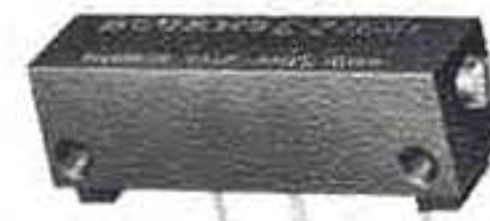

BOURNS
INC

OBSOLETE 1978

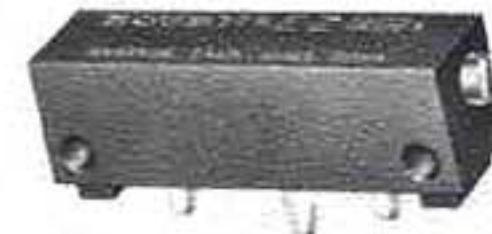
FEATURES

- Low cost, high performance.
- Stable, infinite resolution element.
- Subminiature size and space-saving configuration.
- Wiper assembly idles at both ends of travel preventing damage from forced adjustment.
- 15-turn screwdriver adjustment.
- Stable wiper setting due to self-locking adjustment screw.

Actual Size



3068 P



3068 S

STANDARD RESISTANCES

Resistance (Ohms)	Part Numbers*	
	3068S Solder Lugs	3068P Printed Circuit Pins
20,000	3068S-1-203	3068P-1-203
50,000	3068S-1-503	3068P-1-503
100,000	3068S-1-104	3068P-1-104

SPECIAL RESISTANCES AVAILABLE FROM 10,000 TO 2,000,000 OHMS

Resistance (Ohms)	Part Numbers*	
	3068S Solder Lugs	3068P Printed Circuit Pins
200,000	3068S-1-204	3068P-1-204
500,000	3068S-1-504	3068P-1-504
1,000,000	3068S-1-105	3068P-1-105

*The last three digits of the part number represent the resistance in standard code.

Model 3068 E-Z-TRIM® Potentiometer

SPECIFICATIONS

ELECTRICAL CHARACTERISTICS

Standard Resistance Range	20,000 to 1,000,000 ohms
Resistance Tolerance	±20% standard
End Settings	0 to 5% voltage ratio

ENVIRONMENTAL CHARACTERISTICS

Power Ratings	0.2 watt at 25°C or 300 volts maximum
Operating Temperature Range	-55° to +85°C
Dielectric Strength	500 volts AC

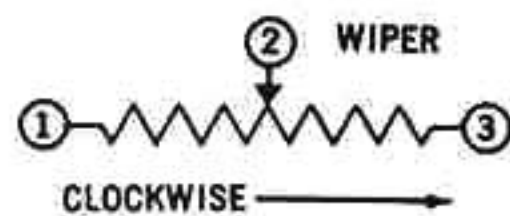
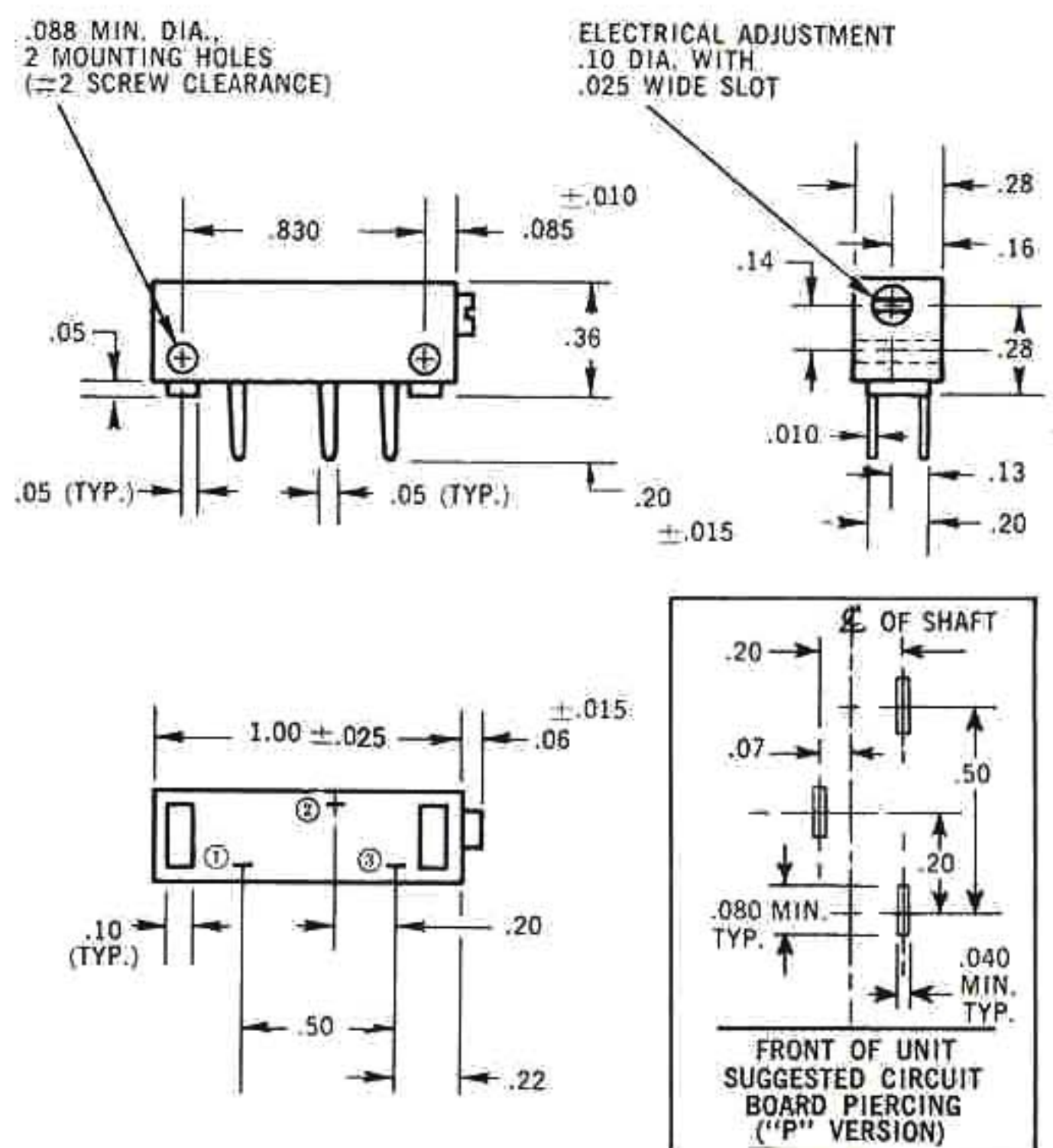
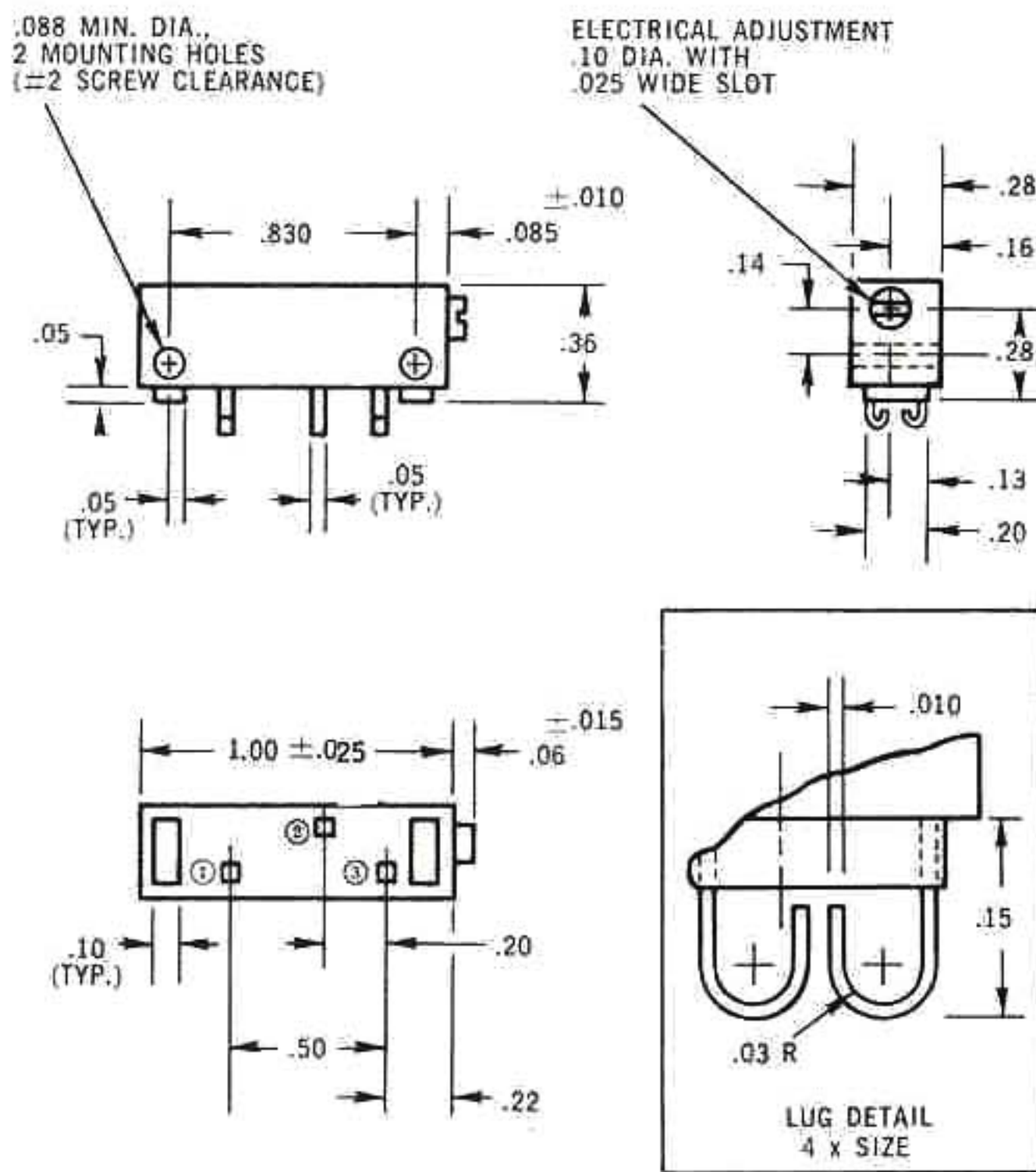
PHYSICAL CHARACTERISTICS

Markings	Manufacturer's name, wiring diagram, date code, resistance and manufacturer's part number
Appearance	Legible markings, no physical defects
Mechanical Adjustment	15 turns nominal
Mechanical Stops	Wiper assembly idles
Weight	Approximately .1 oz.
Terminals:	
S	Solder lugs
P	Printed circuit pins

OBSOLETE 1978

3068S

3068P



TOLERANCES:
 .xx = ±0.010
 .xxx = ±0.005
 EXCEPT WHERE NOTED

