



## Features

- 40 mm travel
- Metal housing
- Carbon resistive element
- Smooth sliding feel
- Non-standard options available upon request



This model is not recommended for new designs.

**BOURNS®**

# 1023 - Slide Potentiometer

### Characteristics

Stroke Length.....40 mm  
 Standard Resistance Range  
 .....100 ohms to 4.7 megohms  
 Resistance Taper.....Linear  
 Power Rating.....0.25 W  
 Operating Force.....0.8 to 2.4 N  
 End Stop Force.....50 N max.  
 Temperature Range.....-25 °C to +70 °C  
 Slide Life.....10,000 cycles

### Standard Resistance Table

Resistance (Ohms)	Resistance Code
100	101
220	221
470	471
1,000	102
2,200	222
4,700	472
10,000	103
22,000	223
47,000	473
100,000	104
220,000	224
470,000	474
1,000,000	105
2,200,000	225
4,700,000	475

### How to Order

**1023 - 626 - A B 103**

Model Type \_\_\_\_\_  
 • 1023

Terminal & Lever Style \_\_\_\_\_  
 • 626  
 Other styles available upon request.

Independent Linearity \_\_\_\_\_  
 A = ±5 %  
 B = ±4 %  
 C = ±3 %  
 D = ±2.5 %  
 E = ±2 %

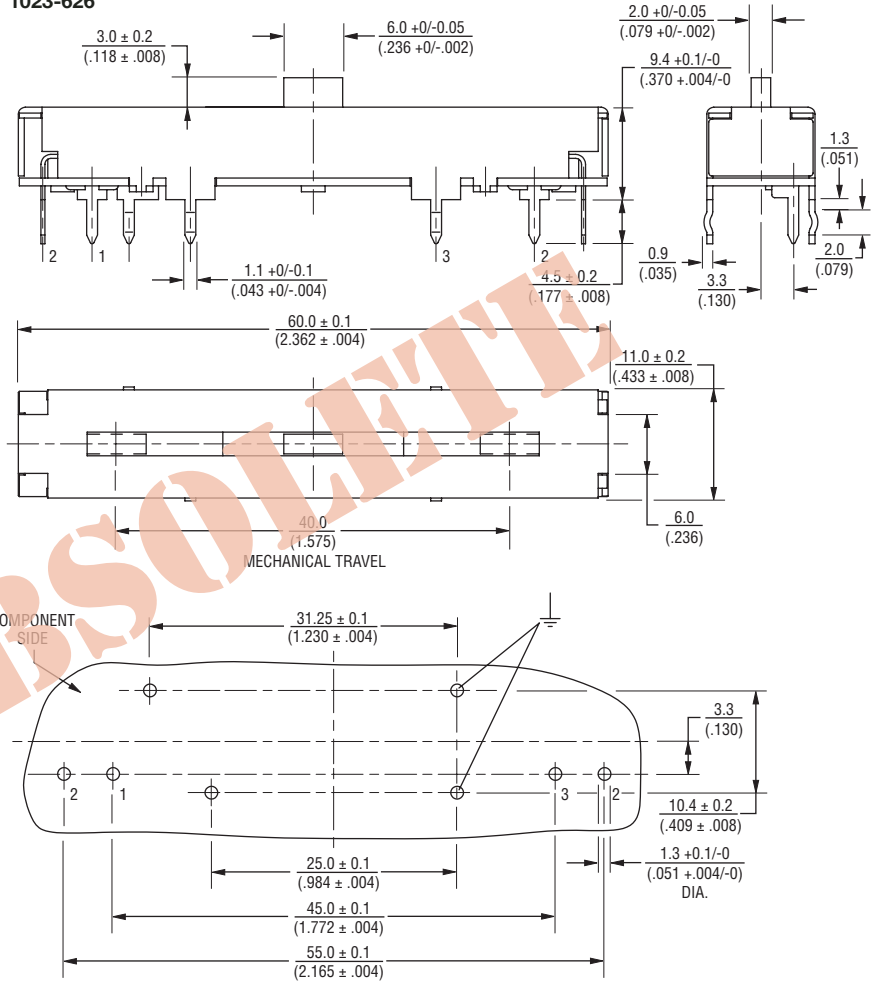
Element Taper \_\_\_\_\_  
 B = Linear Carbon ±20 %  
 E = Linear Carbon ±10 %  
 M = Linear Carbon ±30 %

Resistance Code \_\_\_\_\_

Other versions available upon request.

### Product Dimensions

1023-626



DIMENSIONS ARE:  $\frac{\text{MM}}{\text{(INCHES)}}$