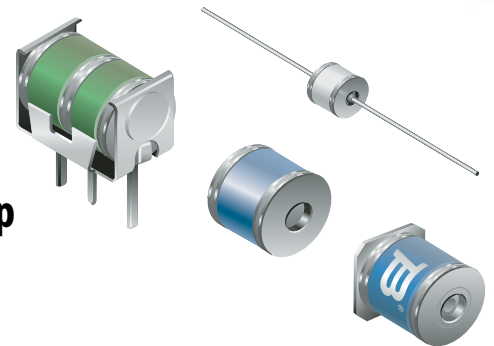




# Featured Products Bulletin

## GAS DISCHARGE TUBES



### Bourns® GDT Products Group Change in MOQ

Riverside, California - November 20, 2008 - Effective January 1, 2009, the minimum order quantity (MOQ) for selected GDT models will increase to 1000 with no change to multiple quantities. A detailed part number listing is shown on pages 2-3.

Model		MOQ as of 1/1/2009	Current MOQ
<i>2-electrode</i>			
<b>2027-XX-</b>	A	1000	100
	B or C	1000	100
	B5 or C5	1000	100
	B10 or C10	1000	100
	SM	1000	100
<b>2035-XX-</b>	A	1000	100
	B or C	1000	100
	B5 or C5	1000	100
	SM	1000	100
<b>2037-XX-</b>	A	1000	100
	B or C	1000	100
	B5 or C5	1000	100
<b>2039-xx-</b>	SM	1000	100

Model		MOQ as of 1/1/2009	Current MOQ
<i>3-electrode</i>			
<b>2026-XX-</b>	A	1000	100
	A1	1000	100
	C	1000	100
	CB	1000	100
	C2 or C3 or C4	1000	100
	C8 or C13 or C18	1000	100
	with Fail-Short xxF	1000	100
<b>2036-XX-</b>	A	1000	100
	B or C	1000	100
	B2 or C2	1000	100
	B3 or C3	1000	100
	B8 or B9	1000	100
	with Fail-Short xxF	1000	100
<b>2038-xx-</b>	SM	1000	1000

Bourns® GDT Products Group

Change in MOQ

November, 2008

Page 2 of 3

Part Number	MOQ	Part Number	MOQ	Part Number	MOQ	Part Number	MOQ
2026-07-A1	1,000	2026-25-C2F	1,000	2026-40-C2LF	1,000	2027-20-ALF	1,000
2026-07-C	1,000	2026-25-C2F-F1	1,000	2026-40-C4	1,000	2027-20-B	1,000
2026-07-C13	1,000	2026-25-C2FLF	1,000	2026-40-C4LF	1,000	2027-20-BLF	1,000
2026-07-C18	1,000	2026-25-C4	1,000	2026-40-C8	1,000	2027-23-A	1,000
2026-07-C2	1,000	2026-25-C4F	1,000	2026-40-CF	1,000	2027-23-ALF	1,000
2026-07-C2F	1,000	2026-25-C8	1,000	2026-42-C14	1,000	2027-23-B10	1,000
2026-07-C2FLF	1,000	2026-25-CB	1,000	2026-42-C2	1,000	2027-23-BHLF	1,000
2026-07-C2LF	1,000	2026-25-CBLF	1,000	2026-42-C2F	1,000	2027-23-BLF	1,000
2026-07-C3	1,000	2026-25-CF	1,000	2026-42-C2FLF	1,000	2027-23-BS	1,000
2026-07-C4	1,000	2026-26-C2	1,000	2026-42-C2LF	1,000	2027-23-C	1,000
2026-07-C4F	1,000	2026-26-CLF	1,000	2026-47-A	1,000	2027-23-C5LF	1,000
2026-07-CLF	1,000	2026-30-C14	1,000	2026-47-C	1,000	2027-23-C7	1,000
2026-09-C14	1,000	2026-30-C2	1,000	2026-47-C18	1,000	2027-23-CSM2LF	1,000
2026-09-C14LF	1,000	2026-30-C2FLF	1,000	2026-47-C2	1,000	2027-25-B	1,000
2026-09-C2	1,000	2026-30-C2LF	1,000	2026-47-C2FLF	1,000	2027-25-BLF	1,000
2026-09-C2F	1,000	2026-30-C3LF	1,000	2026-47-C2LF	1,000	2027-25-CLF	1,000
2026-09-C2FLF	1,000	2026-30-C4LF	1,000	2026-47-C4	1,000	2027-30-A	1,000
2026-09-C2LF	1,000	2026-30-C8	1,000	2026-47-C4LF	1,000	2027-30-B	1,000
2026-09-C3	1,000	2026-30-CB	1,000	2026-50-C2	1,000	2027-30-B19LF	1,000
2026-09-C4	1,000	2026-33-C16M143	1,000	2026-60-A	1,000	2027-30-BLF	1,000
2026-09-C4LF	1,000	2026-33-C2M143	1,000	2026-60-A1LF	1,000	2027-30-C	1,000
2026-09-CB	1,000	2026-33-C4AM143-S1	1,000	2026-60-C	1,000	2027-30-CLF	1,000
2026-09-CBLF	1,000	2026-35-A	1,000	2026-60-C18	1,000	2027-35-A	1,000
2026-09-CLF	1,000	2026-35-A1F	1,000	2026-60-C2	1,000	2027-35-B10	1,000
2026-15-A	1,000	2026-35-ALF	1,000	2026-60-C2FLF	1,000	2027-35-BLF	1,000
2026-15-A1LF	1,000	2026-35-C	1,000	2026-60-C2LF	1,000	2027-35-C	1,000
2026-15-C	1,000	2026-35-C13F	1,000	2026-60-C3-CEI	1,000	2027-35-CLF	1,000
2026-15-C13LF	1,000	2026-35-C13F-S01	1,000	2026-60-C3LF	1,000	2027-40-A	1,000
2026-15-C14	1,000	2026-35-C14F	1,000	2026-60-C4	1,000	2027-40-B	1,000
2026-15-C2F	1,000	2026-35-C18	1,000	2026-60-C4LF	1,000	2027-40-B19LF	1,000
2026-15-C2FLF	1,000	2026-35-C2F	1,000	2026-60-CLF	1,000	2027-40-BLF	1,000
2026-15-C2LF	1,000	2026-35-C2FLF	1,000	2027-09-A	1,000	2027-40-C	1,000
2026-15-C3	1,000	2026-35-C2F-S01	1,000	2027-09-A-HS	1,000	2027-42-ALF	1,000
2026-15-C4	1,000	2026-35-C2LF	1,000	2027-09-B10	1,000	2027-42-B	1,000
2026-15-CLF	1,000	2026-35-C3F	1,000	2027-09-B10LF	1,000	2027-42-BLF	1,000
2026-20-C2FLF	1,000	2026-35-C4	1,000	2027-09-B19	1,000	2027-42-C10	1,000
2026-23-A	1,000	2026-35-C4CF-S01	1,000	2027-09-B19LF	1,000	2027-42-CLF	1,000
2026-23-A1F	1,000	2026-35-C4F	1,000	2027-09-BLF	1,000	2027-47-A	1,000
2026-23-A1LF	1,000	2026-35-C4FLF	1,000	2027-09-C	1,000	2027-47-A-HS	1,000
2026-23-ALF	1,000	2026-35-C4FLF-S01	1,000	2027-09-C10	1,000	2027-47-B	1,000
2026-23-C16M136	1,000	2026-35-C4F-S01	1,000	2027-09-C10LF	1,000	2027-47-BLF	1,000
2026-23-C2	1,000	2026-35-C4LF	1,000	2027-09-CLF	1,000	2027-47-CLF	1,000
2026-23-C2F	1,000	2026-35-CF	1,000	2027-09-CSM2LF	1,000	2027-60-A	1,000
2026-23-C2F-CS	1,000	2026-35-CF-S01	1,000	2027-15-A	1,000	2027-60-A-HS	1,000
2026-23-C2FLF	1,000	2026-35-CLF	1,000	2027-15-ALF	1,000	2027-60-B	1,000
2026-23-C2M136	1,000	2026-35-CXF-S01	1,000	2027-15-B10	1,000	2027-60-B19LF	1,000
2026-23-C4F-CS	1,000	2026-35R-C2F	1,000	2027-15-B10LF	1,000	2027-60-BIR	1,000
2026-23-C4LF	1,000	2026-40-A	1,000	2027-15-BH	1,000	2027-60-BLF	1,000
2026-23-C8	1,000	2026-40-C13F	1,000	2027-15-BHLF	1,000	2027-60-C10LF	1,000
2026-23-CBLF	1,000	2026-40-C18	1,000	2027-15-BHW	1,000	2027-60-CLF	1,000
2026-23-CF	1,000	2026-40-C2	1,000	2027-15-BLF	1,000	2035-09-A	1,000
2026-23-CLF	1,000	2026-40-C2F	1,000	2027-15-C	1,000	2035-09-ALF	1,000
2026-25-A	1,000	2026-40-C2F-F1	1,000	2027-15-CLF	1,000	2035-09-B5	1,000
2026-25-C2	1,000	2026-40-C2FLF	1,000	2027-20-A	1,000	2035-09-B5LF	1,000

Bourns® GDT Products Group  
Change in MOQ  
November, 2008  
Page 3 of 3

Part Number	MOQ	Part Number	MOQ	Part Number	MOQ	Part Number	MOQ
2035-09-C5	1,000	2036-20-B2	1,000	2036-40-C3LF	1,000	2037-40-C	1,000
2035-09-SMLF	1,000	2036-20-B2F	1,000	2036-42-A	1,000	2037-40-CLF	1,000
2035-15-B5	1,000	2036-20-B2LF	1,000	2036-42-B2F	1,000	2037-42-B5LF	1,000
2035-15-B5LF	1,000	2036-20-B3FLF	1,000	2036-42-B2FLF	1,000	2037-47-BLF	1,000
2035-20-A	1,000	2036-20-C2	1,000	2036-42-B2LF	1,000	2037-60-B5	1,000
2035-20-ALF	1,000	2036-23-A	1,000	2036-42-B3FLF	1,000	2037-60-B5LF	1,000
2035-20-B5	1,000	2036-23-ALF	1,000	2036-42-B9	1,000	2037-60-C	1,000
2035-20-BLF	1,000	2036-23-AM	1,000	2036-42-C2	1,000	2037-60-CLF	1,000
2035-20-SM	1,000	2036-23-B	1,000	2036-42-C2F	1,000	2038-110-SM	1,000
2035-23-ALF	1,000	2036-23-B2	1,000	2036-42-C2LF	1,000	2038-110-SMLF	1,000
2035-23-B5	1,000	2036-23-B2LF	1,000	2036-47-A	1,000	2038-110-SM-RP	1,000
2035-23-B5LF	1,000	2036-23-B3	1,000	2036-47-ALF	1,000	2038-35-SM	1,000
2035-25-B5	1,000	2036-23-B3F	1,000	2036-47-B	1,000	2038-35-SMLF	1,000
2035-30-B5LF	1,000	2036-23-B3LF	1,000	2036-47-B2	1,000	2038-35-SM-RP	1,000
2035-35-B5LF	1,000	2036-23-B7LF-S01	1,000	2036-47-B3FLF	1,000	2038-35-SM-RP2LF	1,000
2035-35-C	1,000	2036-23-BC2F	1,000	2036-47-B3LF	1,000	2038-42-SM	1,000
2035-35-SM	1,000	2036-23-BLF	1,000	2036-47-B9	1,000	2038-42-SMLF	1,000
2035-35-SM-LF	1,000	2036-23-C	1,000	2036-47-BLF	1,000	2038-42-SM-RP	1,000
2035-40-BLF	1,000	2036-23-C2	1,000	2036-47-C2	1,000	2038-47-SM	1,000
2035-40-SM	1,000	2036-23-C2LF	1,000	2036-47-SMLF	1,000	2038-47-SMLF	1,000
2035-42-BLF	1,000	2036-23-C6F-S	1,000	2036-60-ALF	1,000	2038-47-SM-RP	1,000
2035-42-SM	1,000	2036-23-CLF	1,000	2036-60-B2	1,000	2038-60-SM	1,000
2035-47-BLF	1,000	2036-25-B2	1,000	2036-60-B2F	1,000	2038-60-SMLF	1,000
2035-47-SM	1,000	2036-25-B3	1,000	2036-60-B2LF	1,000	2038-60-SM-RP	1,000
2035-60-C5LF	1,000	2036-25-B3F	1,000	2036-60-B3	1,000	2038-80-SM	1,000
2035-A	1,000	2036-25-B3FLF	1,000	2036-60-B3FLF	1,000	2038-80-SMLF	1,000
2036-07-A	1,000	2036-25-B3LF	1,000	2036-60-B3LF	1,000	2038-80-SM-RP	1,000
2036-07-ALF	1,000	2036-25-C2	1,000	2036-60-B9	1,000	2039-110-SMLF	1,500
2036-07-B2LF	1,000	2036-25-CLF	1,000	2036-60-C2	1,000	2039-110-SM-RPLF	1,500
2036-07-B3	1,000	2036-30-B2F	1,000	2036-60-C2LF	1,000		
2036-07-B3FLF	1,000	2036-30-B3	1,000	2036-60-C3LF	1,000		
2036-07-B3LF	1,000	2036-30-B3FLF	1,000	2037-09-A	1,000		
2036-07-B9LF	1,000	2036-30-BLF	1,000	2037-09-ALF	1,000		
2036-07-C2LF	1,000	2036-30-C2	1,000	2037-09-B	1,000		
2036-09-ALF	1,000	2036-30-SMLF	1,000	2037-09-BLF	1,000		
2036-09-B2	1,000	2036-35-B	1,000	2037-09-C5	1,000		
2036-09-B2F	1,000	2036-35-B2LF	1,000	2037-15-B	1,000		
2036-09-B2LF	1,000	2036-35-B3	1,000	2037-23-B	1,000		
2036-09-B3	1,000	2036-35-B3FLF	1,000	2037-23-B5	1,000		
2036-09-B3FLF	1,000	2036-35-B3LF	1,000	2037-23-B5-A	1,000		
2036-09-B3LF	1,000	2036-35-B4	1,000	2037-23-B5-E	1,000		
2036-09-C	1,000	2036-35-BF	1,000	2037-23-BLF	1,000		
2036-09-C2	1,000	2036-35-BLF	1,000	2037-25-A	1,000		
2036-09-C3LF	1,000	2036-35-C2	1,000	2037-25-B	1,000		
2036-15-A	1,000	2036-35-C99FLF-S01	1,000	2037-30-A	1,000		
2036-15-B	1,000	2036-35-C99F-S01	1,000	2037-30-B	1,000		
2036-15-B2	1,000	2036-35-CF	1,000	2037-35-B	1,000		
2036-15-B2F	1,000	2036-40-B	1,000	2037-35-B5	1,000		
2036-15-B2LF	1,000	2036-40-B2	1,000	2037-35-B5LF	1,000		
2036-15-B3	1,000	2036-40-B2LF	1,000	2037-35-BLF	1,000		
2036-15-B3FLF	1,000	2036-40-B3FLF	1,000	2037-35-BT1LF	1,000		
2036-15-B99	1,000	2036-40-B3LF	1,000	2037-35-C	1,000		
2036-15-B99LF	1,000	2036-40-BLF	1,000	2037-35-CLF	1,000		
2036-15-C2LF	1,000	2036-40-C2	1,000	2037-40-A	1,000		