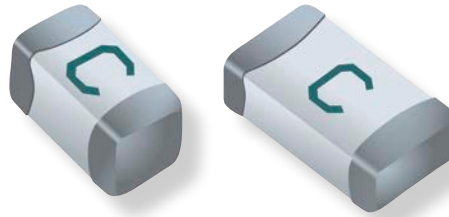




NEW PRODUCT RELEASE

SINGLFUSE™ SMD FUSES



Bourns SinglFuse Product Line Announces Two New AEC-Q200 Compliant SMD Fuse Families

Model SF-0603SA-M and SF-1206SA-M Series

Riverside, California – June 15, 2021 – Bourns is pleased to announce the introduction of two new families of AEC-Q200-equivalent compliant* SMD fuses to complement its already successful line of SinglFuse™ SMD Fuse products.

The new Model [SF-0603SA-M](#) and [SF-1206SA-M](#) series utilize Bourns' popular multilayer ceramic design for enhanced voltage and current handling capabilities in small 0603 and 1206 package sizes. Both families are fully compliant with Bourns' internal AEC-Q200 equivalent test procedures to help ensure performance robustness in certain harsh environments including automotive, industrial, low to medium risk medical**, telecom and Battery Management Systems applications, among others.

Series	Size (EIA)	Fuse Type	Rated Current	Rated Voltage	UL Listed	AEC-Q200-Equivalent Compliant*	RoHS Compliant***	Halogen Free****
SF-0603SA-M	0603	Slow Blow	0.5 A – 8 A	24–65 Vdc	Yes	Yes	Yes	Yes
SF-1206SA-M	1206	Slow Blow	0.5 A – 5 A	65 Vdc	Yes	Yes	Yes	Yes

Bourns continues to broaden its portfolio of SinglFuse™ SMD Fuses to address the growing need for effective overcurrent protection in a variety of applications including transportation, telecom and networking equipment, computing and server storage, portable memory, handheld electronics and gaming systems, smart appliances, battery charging and power management, robotics and industrial automation.

Bourns® SinglFuse™ SMD Fuse products are UL 248-14 listed, RoHS compliant*** and halogen free****. For additional information on Bourns® SinglFuse™ products, please visit the Bourns website at www.bourns.com/products/circuit-protection/singlfuse-smd-fuses. Should you have any questions, please feel free to contact [Bourns Customer Service/Inside Sales](#).

* Meets Bourns' internal AEC-Q200 equivalent test plan.

** Bourns® products have not been designed for and are not intended for use in "lifesaving," "life-critical" or "life-sustaining" applications nor any other applications where failure or malfunction of the Bourns® product may result in personal injury or death. See Legal Disclaimer Notice <http://www.bourns.com/docs/legal/disclaimer.pdf>.

*** RoHS Directive 2015/863, Mar 31, 2015 and Annex.

**** Bourns considers a product to be "halogen free" if (a) the Bromine (Br) content is 900 ppm or less; (b) the Chlorine (Cl) content is 900 ppm or less; and (c) the total Bromine (Br) and Chlorine (Cl) content is 1500 ppm or less.

SF2105

Features

- Slow blow fusing speed
- EIA 0603 & 1206 footprint
- AEC-Q200-equivalent compliant*
- UL 248-14 listed
- RoHS compliant*** and halogen free****



Applications

- Industrial
- Medical (low to medium risk)**
- Telecom
- Battery Management Systems (BMS)

* Meets Bourns' internal AEC-Q200 equivalent test plan.

** Bourns® products have not been designed for and are not intended for use in "lifesaving," "life-critical" or "life-sustaining" applications nor any other applications where failure or malfunction of the Bourns® product may result in personal injury or death. See Legal Disclaimer Notice <http://www.bourns.com/docs/legal/disclaimer.pdf>.

*** RoHS Directive 2015/863, Mar 31, 2015 and Annex.

**** Bourns considers a product to be "halogen free" if (a) the Bromine (Br) content is 900 ppm or less; (b) the Chlorine (Cl) content is 900 ppm or less; and (c) the total Bromine (Br) and Chlorine (Cl) content is 1500 ppm or less.