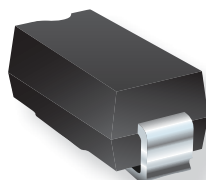


Featured Products Bulletin

CHIP DIODES



May 27, 2015

Bourns Adds New High Voltage TVS Diode Products to the Model SMAJ, SMBJ and SMCJ Series

Bourns is pleased to announce the release of high voltage, 180 V to 440 V, unidirectional and bidirectional TVS diodes, extending the existing range of the Model SMAJ, SMBJ and SMCJ Series Transient Voltage Suppressor Diodes. The portable communications, computing and power equipment markets are challenging the semiconductor industry to develop increasingly higher voltage electronic components. Bourns offers Transient Voltage Suppressor Diodes for surge and ESD protection applications, in compact chip package size formats.

Series	Additional Standoff Voltage	Complete Range Standoff Voltage	Unidirectional / Bidirectional	Power Wattage
SMAJ	180 ~ 440 V	5 ~ 495 V	Yes	400 W
SMBJ				600 W
SMCJ				1500 W

The product data sheets with detailed specifications can be viewed on Bourns' website at www.bourns.com. See tables 1 - 3 for the new part numbers.

Implementation date is as follows:

We began phasing in the new part numbers: March, 2015

Should you have any questions or need additional information, please contact [Customer Service/ Inside Sales](#).

Features

- Surface mount SMA, SMB and SMC package
- Standoff voltage: 5.0 to 495 volts
- Power dissipation: SMAJ 400 watts, SMBJ 600 watts and SMCJ 1500 watts
- RoHS compliant*

Applications

- IEC 61000-4-2 ESD (Min. Level 4)
- IEC 61000-4-4 EFT
- IEC 61000-4-5 Surge

* RoHS Directive 2002/95/EC Jan. 27, 2003 including annex and RoHS Recast 2011/65/EU June 8, 2011.

May, 2015

Bourns Adds New High Voltage TVS Diode Products to the Model SMAJ, SMBJ and SMCJ Series

Page 2 of 2

**Table 1:
New SMAJ Series
Part Numbers**

Unidirectional Device	Bidirectional Device
SMAJ180A	SMAJ180CA
SMAJ200A	SMAJ200CA
SMAJ220A	SMAJ220CA
SMAJ250A	SMAJ250CA
SMAJ300A	SMAJ300CA
SMAJ350A	SMAJ350CA
SMAJ400A	SMAJ400CA
SMAJ440A	SMAJ440CA

**Table 2:
New SMBJ Series
Part Numbers**

Unidirectional Device	Bidirectional Device
SMBJ180A	SMBJ180CA
SMBJ200A	SMBJ200CA
SMBJ220A	SMBJ220CA
SMBJ250A	SMBJ250CA
SMBJ300A	SMBJ300CA
SMBJ400A	SMBJ400CA
SMBJ440A	SMBJ440CA

**Table 3:
New SMCJ Series
Part Numbers**

Unidirectional Device	Bidirectional Device
SMCJ180A	SMCJ180CA
SMCJ200A	SMCJ200CA
SMCJ220A	SMCJ220CA
SMCJ250A	SMCJ250CA
SMCJ300A	SMCJ300CA
SMCJ350A	SMCJ350CA
SMCJ400A	SMCJ400CA
SMCJ440A	SMCJ440CA