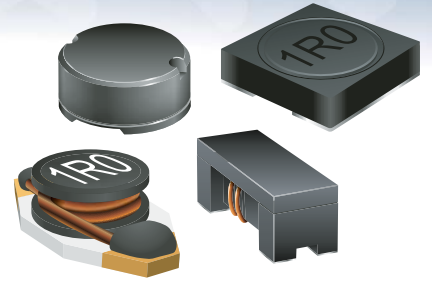




Featured Products Bulletin

INDUCTIVE COMPONENTS



Bourns® Inductive Components Product Line Adds 10 New Inductors

Riverside, California - August 31, 2007 - Bourns® Inductive Components Product Line expands the inductive products offering with the addition of 10 inductors – eight power inductors and two line filters. All of these models will replace JW Miller® models that will be discontinued on December 31, 2007, as previously announced.

The table below notes the Bourns® model and the JW Miller® model that it will replace. A part number-to-part number cross reference is listed on pages 4-7.

<u>Bourns® Model</u>	<u>JW Miller® Model</u>
SDR6603	PM1608
SRF2012	PM0805CM
SRF3216	PM1206CM
SRR0905	PM105SB
SRR4018	PM42S
SRR4028	PM428S
SRR5018	PM518S
SRR5028	PM528S
SRR6028	PM628S
SRR6038	PM638S

Data sheets for all of these models are available on the Bourns website (www.bourns.com). A summary of Features and Applications for each new model is listed on pages 2 & 3.

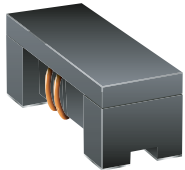


SDR6603 Features

- Height of 2.92 mm
- Current rating up to 2.9 A
- RoHS compliant*

SDR6603 Applications

- Input/output of DC/DC converters
- Power supplies for:
 - Portable communications equipment
 - Camcorders
 - LCD TVs
 - Car radios

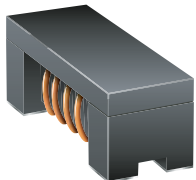


SRF2012 Features

- High impedance value
- Current rating up to 450 mA
- RoHS compliant*

SRF2012 Applications

- Noise suppression
- Personal computers
- Display panels



SRF3216 Features

- High impedance value
- Current rating up to 400 mA
- RoHS compliant*

SRF3216 Applications

- Noise suppression
- Personal computers
- Display panels

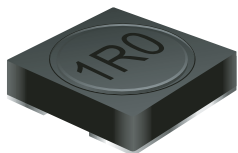


SRR0905 Features

- Available in E12 series
- Height of 2.9 mm
- Current rating up to 2.1 A
- RoHS compliant*

SRR0905 Applications

- Input/output of DC/DC converters
- Power supplies for:
 - Portable communications equipment
 - Camcorders
 - LCD TVs
 - Car radios

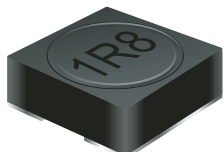


SRR4018 Features

- Height of 2.0 mm
- Current rating up to 2.7 A
- RoHS compliant*

SRR4018 Applications

- Input/output of DC/DC converters
- Power supplies for:
 - Portable communications equipment
 - Camcorders
 - LCD TVs
 - Car radios

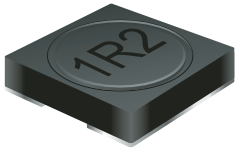


SRR4028 Features

- Height of 3.0 mm
- Current rating up to 3.1 A
- RoHS compliant*

SRR4028 Applications

- Input/output of DC/DC converters
- Power supplies for:
 - Portable communications equipment
 - Camcorders
 - LCD TVs
 - Car radios



SRR5018 Features

- Height of 2.0 mm max.
- Current rating up to 3.0 A
- RoHS compliant*

SRR5018 Applications

- Input/output of DC/DC converters
- Power supplies for:
 - Portable communications equipment
 - Camcorders
 - LCD TVs
 - Car radios

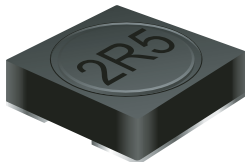


SRR5028 Features

- Height of 3.0 mm max.
- Current rating up to 3.0 A
- RoHS compliant*

SRR5028 Applications

- Input/output of DC/DC converters
- Power supplies for:
 - Portable communications equipment
 - Camcorders
 - LCD TVs
 - Car radios



SRR6028 Features

- Height of 3.0 mm max.
- Current rating up to 2.8 A
- RoHS compliant*

SRR6028 Applications

- Input/output of DC/DC converters
- Power supplies for:
 - Portable communications equipment
 - Camcorders
 - LCD TVs
 - Car radios



SRR6038 Features

- Height of 4.0 mm max.
- Current rating up to 3.5 A
- RoHS compliant*

SRR6038 Applications

- Input/output of DC/DC converters
- Power supplies for:
 - Portable communications equipment
 - Camcorders
 - LCD TVs
 - Car radios

Cross Reference of Additional Models

Model	JWM Part Number	BOURNS Part Number	Value (μ H)	Date on which JWM Model will be Discontinued
PM0805CM	PM0805CM-300-RC	SRF2012-300Y	30	31-December-2007
PM0805CM	PM0805CM-670-RC	SRF2012-670Y	67	31-December-2007
PM0805CM	PM0805CM-900-RC	SRF2012-900Y	90	31-December-2007
PM0805CM	PM0805CM-121-RC	SRF2012-121Y	120	31-December-2007
PM0805CM	PM0805CM-161-RC	SRF2012-161Y	160	31-December-2007
PM0805CM	PM0805CM-181-RC	SRF2012-181Y	180	31-December-2007
PM0805CM	PM0805CM-221-RC	SRF2012-221Y	220	31-December-2007
PM0805CM	PM0805CM-261-RC	SRF2012-261Y	260	31-December-2007
PM0805CM	PM0805CM-301-RC	SRF2012-301Y	300	31-December-2007
PM0805CM	PM0805CM-361-RC	SRF2012-361Y	360	31-December-2007
PM0805CM	PM0805CM-371-RC	SRF2012-371Y	370	31-December-2007
PM105SB	PM105SB-100M	SRR0905-100M	10	31-December-2007
PM105SB	PM105SB-120M	SRR0905-120M	12	31-December-2007
PM105SB	PM105SB-150M	SRR0905-150M	15	31-December-2007
PM105SB	PM105SB-180M	SRR0905-180M	18	31-December-2007
PM105SB	PM105SB-220M	SRR0905-220M	22	31-December-2007
PM105SB	PM105SB-270M	SRR0905-270M	27	31-December-2007
PM105SB	PM105SB-330L	SRR0905-330Y	33	31-December-2007
PM105SB	PM105SB-390L	SRR0905-390Y	39	31-December-2007
PM105SB	PM105SB-470L	SRR0905-470Y	47	31-December-2007
PM105SB	PM105SB-560L	SRR0905-560Y	56	31-December-2007
PM105SB	PM105SB-680L	SRR0905-680Y	68	31-December-2007
PM105SB	PM105SB-820L	SRR0905-820Y	82	31-December-2007
PM105SB	PM105SB-101K	SRR0905-101K	100	31-December-2007
PM105SB	PM105SB-121K	SRR0905-121K	120	31-December-2007
PM105SB	PM105SB-151K	SRR0905-151K	150	31-December-2007
PM105SB	PM105SB-181K	SRR0905-181K	180	31-December-2007
PM105SB	PM105SB-221K	SRR0905-221K	220	31-December-2007
PM105SB	PM105SB-271K	SRR0905-271K	270	31-December-2007
PM105SB	PM105SB-331K	SRR0905-331K	330	31-December-2007
PM105SB	PM105SB-391K	SRR0905-391K	390	31-December-2007
PM105SB	PM105SB-471K	SRR0905-471K	470	31-December-2007
PM1206CM	PM1206CM-900-RC	SRF3216-900Y	90	31-December-2007
PM1206CM	PM1206CM-161-RC	SRF3216-161Y	160	31-December-2007
PM1206CM	PM1206CM-221-RC	SRF3216-221Y	220	31-December-2007
PM1206CM	PM1206CM-601-RC	SRF3216-601Y	600	31-December-2007
PM1206CM	PM1206CM-102-RC	SRF3216-102Y	1000	31-December-2007
PM1206CM	PM1206CM-222-RC	SRF3216-222Y	2000	31-December-2007
PM1608	PM1608-1R0M	SDR6603-1R0M	1.0	31-December-2007
PM1608	PM1608-1R5M	SDR6603-1R5M	1.5	31-December-2007
PM1608	PM1608-2R2M	SDR6603-2R2M	2.2	31-December-2007
PM1608	PM1608-3R3M	SDR6603-3R3M	3.3	31-December-2007
PM1608	PM1608-4R7M	SDR6603-4R7M	4.7	31-December-2007
PM1608	PM1608-6R8M	SDR6603-6R8M	6.8	31-December-2007
PM1608	PM1608-100M	SDR6603-100M	10	31-December-2007
PM1608	PM1608-150M	SDR6603-150M	15	31-December-2007
PM1608	PM1608-220M	SDR6603-220M	22	31-December-2007
PM1608	PM1608-330M	SDR6603-330M	33	31-December-2007

Cross Reference of Additional Models

Model	JWM Part Number	BOURNS Part Number	Value (μH)	Date on which JWM Model will be Discontinued
PM1608	PM1608-470M	SDR6603-470M	47	31-December-2007
PM1608	PM1608-680M	SDR6603-680M	68	31-December-2007
PM1608	PM1608-101M	SDR6603-101M	100	31-December-2007
PM1608	PM1608-151M	SDR6603-151M	150	31-December-2007
PM1608	PM1608-221M	SDR6603-221M	220	31-December-2007
PM1608	PM1608-331M	SDR6603-331M	330	31-December-2007
PM1608	PM1608-471M	SDR6603-471M	470	31-December-2007
PM1608	PM1608-681M	SDR6603-681M	680	31-December-2007
PM1608	PM1608-102M	SDR6603-102M	1000	31-December-2007
PM4285	PM4285-1R2	SRR4028-1R2Y	1.2	31-December-2007
PM4285	PM4285-1R8	SRR4028-1R8Y	1.8	31-December-2007
PM4285	PM4285-2R2	SRR4028-2R2Y	2.2	31-December-2007
PM4285	PM4285-2R7	SRR4028-2R7Y	2.7	31-December-2007
PM4285	PM4285-3R3	SRR4028-3R3Y	3.3	31-December-2007
PM4285	PM4285-3R9	SRR4028-3R9Y	3.9	31-December-2007
PM4285	PM4285-4R7	SRR4028-4R7Y	4.7	31-December-2007
PM4285	PM4285-5R6	SRR4028-5R6Y	5.6	31-December-2007
PM4285	PM4285-6R8	SRR4028-6R8Y	6.8	31-December-2007
PM4285	PM4285-8R2	SRR4028-8R2Y	8.2	31-December-2007
PM4285	PM4285-100	SRR4028-100Y	10	31-December-2007
PM4285	PM4285-120	SRR4028-120Y	12	31-December-2007
PM4285	PM4285-150	SRR4028-150Y	15	31-December-2007
PM4285	PM4285-180	SRR4028-180Y	18	31-December-2007
PM4285	PM4285-220	SRR4028-220Y	22	31-December-2007
PM4285	PM4285-270	SRR4028-270Y	27	31-December-2007
PM4285	PM4285-330	SRR4028-330Y	33	31-December-2007
PM4285	PM4285-390	SRR4028-390Y	39	31-December-2007
PM4285	PM4285-470	SRR4028-470Y	47	31-December-2007
PM4285	PM4285-560	SRR4028-560Y	56	31-December-2007
PM4285	PM4285-680	SRR4028-680Y	68	31-December-2007
PM4285	PM4285-820	SRR4028-820Y	82	31-December-2007
PM4285	PM4285-101	SRR4028-101Y	100	31-December-2007
PM4285	PM4285-121	SRR4028-121Y	120	31-December-2007
PM4285	PM4285-151	SRR4028-151Y	150	31-December-2007
PM4285	PM4285-181	SRR4028-181Y	180	31-December-2007
PM42S	PM42S-2R2	SRR4018-2R2Y	2.2	31-December-2007
PM42S	PM42S-2R7	SRR4018-2R7Y	2.7	31-December-2007
PM42S	PM42S-3R3	SRR4018-3R3Y	3.3	31-December-2007
PM42S	PM42S-3R9	SRR4018-3R9Y	3.9	31-December-2007
PM42S	PM42S-4R7	SRR4018-4R7Y	4.7	31-December-2007
PM42S	PM42S-5R6	SRR4018-5R6Y	5.6	31-December-2007
PM42S	PM42S-6R8	SRR4018-6R8Y	6.8	31-December-2007
PM42S	PM42S-8R2	SRR4018-8R2Y	8.2	31-December-2007
PM42S	PM42S-100	SRR4018-100Y	10	31-December-2007
PM42S	PM42S-120	SRR4018-120Y	12	31-December-2007
PM42S	PM42S-150	SRR4018-150Y	15	31-December-2007
PM42S	PM42S-180	SRR4018-180Y	18	31-December-2007
PM42S	PM42S-220	SRR4018-220Y	22	31-December-2007

Cross Reference of Additional Models

Model	JWM Part Number	BOURNS Part Number	Value (μ H)	Date on which JWM Model will be Discontinued
PM42S	PM42S-270	SRR4018-270Y	27	31-December-2007
PM42S	PM42S-330	SRR4018-330Y	33	31-December-2007
PM42S	PM42S-390	SRR4018-390Y	39	31-December-2007
PM42S	PM42S-470	SRR4018-470Y	47	31-December-2007
PM42S	PM42S-560	SRR4018-560Y	56	31-December-2007
PM42S	PM42S-680	SRR4018-680Y	68	31-December-2007
PM42S	PM42S-820	SRR4018-820Y	82	31-December-2007
PM42S	PM42S-101	SRR4018-101Y	100	31-December-2007
PM42S	PM42S-121	SRR4018-121Y	120	31-December-2007
PM42S	PM42S-151	SRR4018-151Y	150	31-December-2007
PM42S	PM42S-181	SRR4018-181Y	180	31-December-2007
PM518S	PM518S-4R1	SRR5018-3R9Y	4.1	31-December-2007
PM518S	PM518S-5R4	SRR5018-5R0Y	5.4	31-December-2007
PM518S	PM518S-6R2	SRR5018-6R2Y	6.2	31-December-2007
PM518S	PM518S-8R9	SRR5018-9R0Y	8.9	31-December-2007
PM518S	PM518S-100	SRR5018-100Y	10	31-December-2007
PM518S	PM518S-120	SRR5018-120Y	12	31-December-2007
PM518S	PM518S-150	SRR5018-150Y	15	31-December-2007
PM518S	PM518S-180	SRR5018-180Y	18	31-December-2007
PM518S	PM518S-220	SRR5018-220Y	22	31-December-2007
PM518S	PM518S-270	SRR5018-270Y	27	31-December-20
PM518S	PM518S-330	SRR5018-330Y	33	31-December-2007
PM518S	PM518S-390	SRR5018-390Y	39	31-December-2007
PM518S	PM518S-470	SRR5018-470Y	47	31-December-2007
PM518S	PM518S-560	SRR5018-560Y	56	31-December-2007
PM518S	PM518S-680	SRR5018-680Y	68	31-December-2007
PM518S	PM518S-820	SRR5018-820Y	82	31-December-2007
PM518S	PM518S-101	SRR5018-101Y	100	31-December-2007
PM528S	PM528S-2R6	SRR5028-2R6Y	2.6	31-December-2007
PM528S	PM528S-3R0	SRR5028-3R0Y	3.0	31-December-2007
PM528S	PM528S-4R2	SRR5028-4R2Y	4.2	31-December-2007
PM528S	PM528S-5R3	SRR5028-5R3Y	5.3	31-December-2007
PM528S	PM528S-6R2	SRR5028-6R2Y	6.2	31-December-2007
PM528S	PM528S-8R2	SRR5028-8R2Y	8.2	31-December-2007
PM528S	PM528S-100	SRR5028-100Y	10	31-December-2007
PM528S	PM528S-120	SRR5028-120Y	12	31-December-2007
PM528S	PM528S-150	SRR5028-150Y	15	31-December-2007
PM528S	PM528S-180	SRR5028-180Y	18	31-December-2007
PM528S	PM528S-220	SRR5028-220Y	22	31-December-2007
PM528S	PM528S-270	SRR5028-270Y	27	31-December-2007
PM528S	PM528S-330	SRR5028-330Y	33	31-December-2007
PM528S	PM528S-390	SRR5028-390Y	39	31-December-2007
PM528S	PM528S-470	SRR5028-470Y	47	31-December-2007
PM528S	PM528S-560	SRR5028-560Y	56	31-December-2007
PM528S	PM528S-680	SRR5028-680Y	68	31-December-2007
PM528S	PM528S-820	SRR5028-820Y	82	31-December-2007

Cross Reference of Additional Models

Model	JWM Part Number	BOURNS Part Number	Value (μH)	Date on which JWM Model will be Discontinued
PM528S	PM528S-101	SRR5028-101Y	100	31-December-2007
PM628S	PM628S-3R0	SRR6028-3R3Y	3.0	31-December-2007
PM628S	PM628S-3R9	SRR6028-3R9Y	3.9	31-December-2007
PM628S	PM628S-5R0	SRR6028-5R0Y	5.0	31-December-2007
PM628S	PM628S-6R0	SRR6028-6R0Y	6.0	31-December-2007
PM628S	PM628S-7R3	SRR6028-7R3Y	7.3	31-December-2007
PM628S	PM628S-8R6	SRR6028-8R6Y	8.6	31-December-2007
PM628S	PM628S-100	SRR6028-100Y	10	31-December-2007
PM628S	PM628S-120	SRR6028-120Y	12	31-December-2007
PM628S	PM628S-150	SRR6028-150Y	15	31-December-2007
PM628S	PM628S-180	SRR6028-180Y	18	31-December-2007
PM628S	PM628S-220	SRR6028-220Y	22	31-December-2007
PM628S	PM628S-270	SRR6028-270Y	27	31-December-2007
PM628S	PM628S-330	SRR6028-330Y	33	31-December-2007
PM628S	PM628S-390	SRR6028-390Y	39	31-December-2007
PM628S	PM628S-470	SRR6028-470Y	47	31-December-2007
PM628S	PM628S-560	SRR6028-560Y	56	31-December-2007
PM628S	PM628S-680	SRR6028-680Y	68	31-December-2007
PM628S	PM628S-820	SRR6028-820Y	82	31-December-2007
PM628S	PM628S-101	SRR6028-101Y	100	31-December-2007