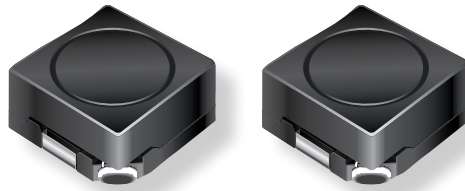


## Product Change Notification

### INDUCTIVE COMPONENTS



January, 2017

### Bourns® Model SRR0603 and SRR0604 Series Shielded Power Inductors *Change to Core Design*

Bourns is changing the core step-length, H\* dimension (see Table 1) of the [Model SRR0603](#) and [SRR0604](#) Series Shielded Power Inductors. The H dimension will be increased slightly to better align the internal core with the mount base.

This core modification will affect the form of the inductor. The fit remains unchanged and the function, quality and reliability of the components should be enhanced.

**Table 1:**

Series	Current	Revised
SRR0603	<p>H Dimension: <math>3.50 \pm 0.10</math> mm</p>	<p>H Dimension: <math>3.70 \pm 0.07</math> mm</p>
	<p>H Dimension: <math>3.50 \pm 0.10</math> mm</p>	<p>H Dimension: <math>3.70 \pm 0.07</math> mm</p>

Note: \* H dimension of core is not published on the standard data sheet.

Implementation dates are as follows:

Date that manufacturing of existing products will cease: **August 5, 2017**

Date that deliveries of modified products will begin: **August 6, 2017**

First date code using the above changes: **1734**

If you have any questions or need additional information, please feel free to contact [Customer Service/ Inside Sales](#).

Affected Part Numbers	
SRR0603 Series	SRR0604 Series
SRR0603-100ML	SRR0604-100ML
SRR0603-101KL	SRR0604-101KL
SRR0603-102KL	SRR0604-102KL
SRR0603-150ML	SRR0604-150ML
SRR0603-151KL	SRR0604-151KL
SRR0603-1R5ML	SRR0604-1R5ML
SRR0603-220ML	SRR0604-220ML
SRR0603-221KL	SRR0604-221KL
SRR0603-270KL	SRR0604-222KL
SRR0603-2R5ML	SRR0604-2R2ML
SRR0603-330KL	SRR0604-2R5ML
SRR0603-331KL	SRR0604-330KL
SRR0603-3R3ML	SRR0604-330YL
SRR0603-470KL	SRR0604-331KL
SRR0603-470YL	SRR0604-3R3ML
SRR0603-471KL	SRR0604-470KL
SRR0603-4R7ML	SRR0604-470YL
SRR0603-680KL	SRR0604-471KL
SRR0603-681KL	SRR0604-4R7ML
SRR0603-6R8ML	SRR0604-680KL
	SRR0604-681KL
	SRR0604-6R8ML