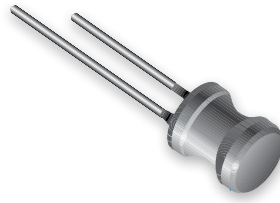




# PRODUCT CHANGE NOTIFICATION

## MAGNETICS



### Bourns® Model RLB0608 Series Radial Lead Inductors

#### *Addition of Manufacturing Site*

Riverside, California – September 29, 2021 – Effective immediately, Bourns will establish a new manufacturing site for the [Model RLB0608 Series Radial Lead Inductors](#). This additional site, located in China, is being established to accommodate the large increase in demand for the affected part numbers. A list of affected part numbers is included below.

The additional manufacturing plant in China uses the same design, component material and manufacturing process as the existing plant.

The form, fit, function and country of origin of these inductors will not change. The quality, reliability and production lead time of these inductors should not change.

Samples from the new production site are available for evaluation.

#### The implementation date is as follows:

First date code using the above changes: **2139**

*For the time being, part numbers RLB0608-102KL and RLB0608-471KL will be produced at the new manufacturing site. All other affected part numbers of the Model RLB0608 series will continue to be produced at the existing manufacturing site.*

If you have any questions or need additional information, please feel free to [contact Customer Service/Inside Sales](#).

Affected Part Numbers			
RLB0608-1R0ML	RLB0608-6R8KL	RLB0608-470KL	RLB0608-331KL
RLB0608-1R2ML	RLB0608-8R2KL	RLB0608-560KL	RLB0608-391KL
RLB0608-1R5ML	RLB0608-100KL	RLB0608-680KL	RLB0608-471KL
RLB0608-1R8ML	RLB0608-120KL	RLB0608-820KL	RLB0608-561KL
RLB0608-2R2ML	RLB0608-150KL	RLB0608-101KL	RLB0608-681KL
RLB0608-2R7ML	RLB0608-180KL	RLB0608-121KL	RLB0608-821KL
RLB0608-3R3ML	RLB0608-220KL	RLB0608-151KL	RLB0608-102KL
RLB0608-3R9ML	RLB0608-270KL	RLB0608-181KL	RLB0608-102KTRL
RLB0608-4R7ML	RLB0608-330KL	RLB0608-221KL	RLB0608-152KL
RLB0608-5R6KL	RLB0608-390KL	RLB0608-271KL	RLB0608-222KL

Users should verify that the described changes will not impact the performance of the product in their specific applications.

IC2170